



## Giunzioni Connecting fittings

# Serie GN100 GN100 Series

GIUNZIONE SERIE GN100  
PROGETTATA PER  
L'ASSEMBLAGGIO STRUTTURALE E  
PER ESSERE ABBINATA AI  
LIVELLATORI.

CARATTERISTICA FONDAMENTALE  
RAPPRESENTATA DAL DETTAGLIO A  
CHE MOSTRA GRANO BOCCOLA E  
PERNO CARATTERIZZATI  
DALL'AVERE FORI PASSANTI.  
IN PARTICOLARE IL PERNO HA UN  
FORO ASOLATO PER FACILITARE IL  
PASSAGGIO DELLA CHIAVE ES.4

IL DETTAGLIO B MOSTRA LA CHIAVE  
ES. 4 PASSANTE ATTRAVERSO LA  
GIUNZIONE PER LA REGOLAZIONE  
DEL LIVELLATORE

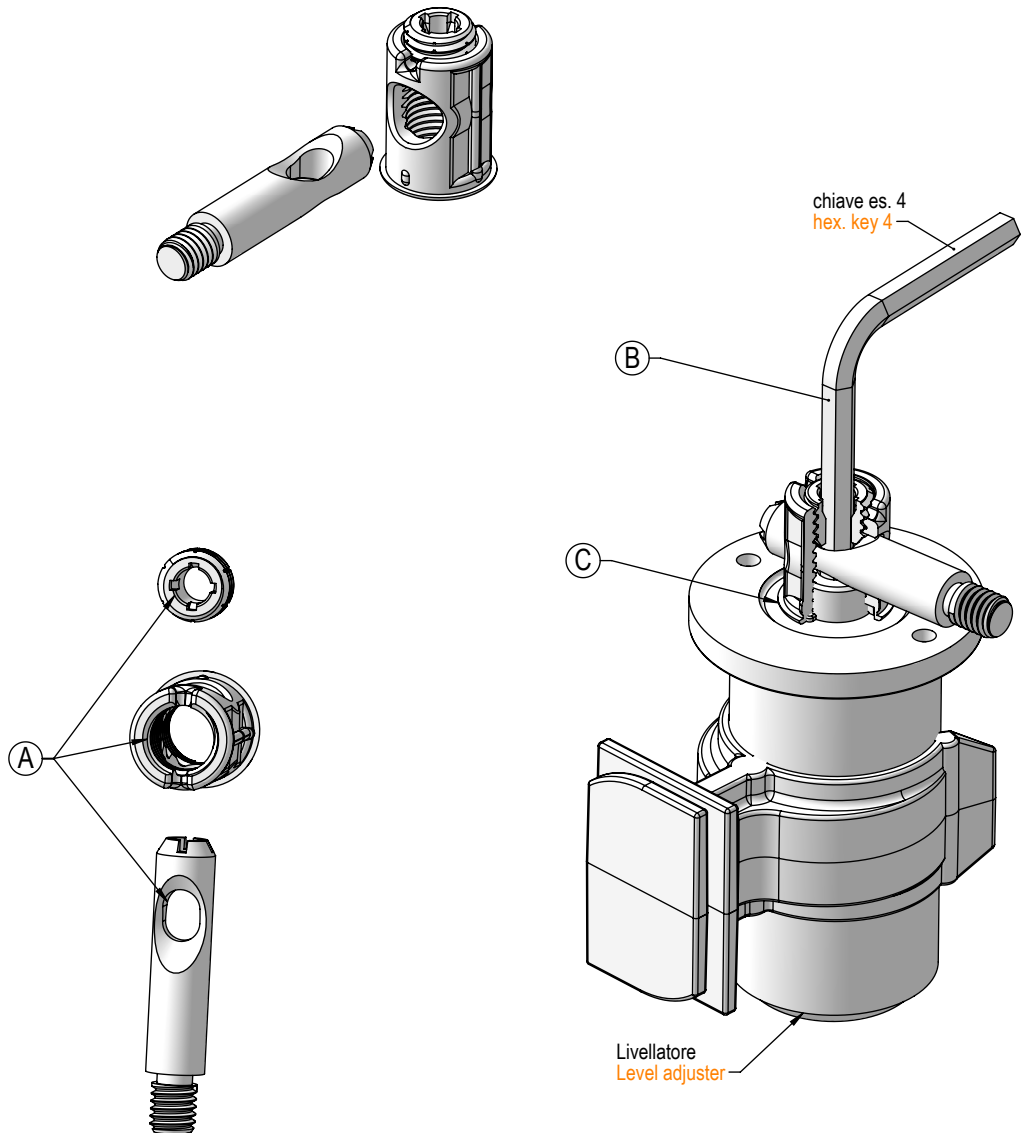
IL DETTAGLIO C: MOSTRA LA  
GIUNZIONE ABBINATA AL  
LIVELLATORE

GN100 SERIES CONNECTING  
FITTING DESIGNED FOR  
STRUCTURAL ASSEMBLY AND TO BE  
COMBINED WITH LEVEL ADJUSTER

GRAIN AND DOWELS  
CHARACTERISED BY THROUGH  
HOLES VISIBLE ON THE DETAIL A.  
IN PARTICULAR, THE DOWEL HAS A  
SLOTTED HOLE TO FACILITATE THE  
PASSAGE OF AN HEX. KEY 4

DETAIL B: SHOWS THE HEX. KEY 4  
PASSING THROUGH THE  
CONNECTING FITTING FOR THE  
ADJUSTMENT OF THE LEVEL  
ADJUSTER

DETAIL C: SHOWS THE CONNECTION  
COMBINED WITH THE LEVEL  
ADJUSTER





## Esempi di applicazioni boccole serie GN100 Application examples housing GN100 series

QUESTE FIGURE HANNO COME SCOPO PRINCIPALE DI FAR NOTARE CHE IL PIANO INFERIORE E SUPERIORE DEL MOBILE HANNO LA STESSA GIUNZIONE E QUINDI FORATURA, INOLTRE SI UTILIZZANO GLI STESSI ACCESSORI (TAPPI).

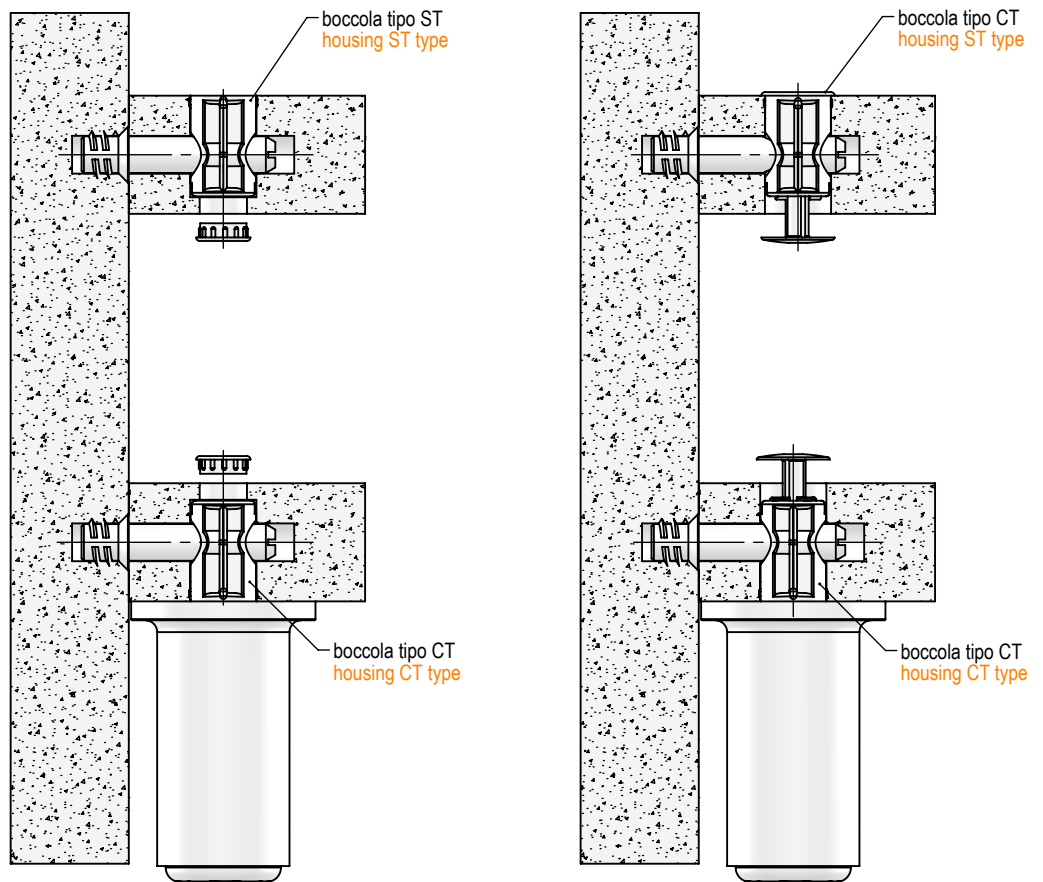
**BOCCOLA ST:** CARATTERIZZATA DALL' ESSERE SENZA BORDO. NON PRESENTA SPORGENZE SUI PIANI.

**BOCCOLA CT:** CARATTERIZZATA DALL'ESSERE CON BORDO, VIENE UTILIZZATA IN PARTICOLARE COL DOPPIO FORO PER RIDURRE LE DIMENSIONI DEI TAPPI IN VISTA. PARTENDO DA SPESSORE MINIMO 25 CON LA CT SI PUO' ASSEMBLARE IL TAPPO FORATO.

THESE FIGURES HAVE AS MAIN PURPOSE TO POINT OUT THAT THE LOWER AND UPPER SURFACE OF THE FURNITURE HAVE THE SAME CONNECTION, MILLINGS AND ACCESSORIES (CAPS).

**ST HOUSING:** CHARACTERISED BY BEING EDGELESS, IT HAS NO PROTRUSIONS ON THE SURFACES.

**CT HOUSING:** CHARACTERISED BY HAVING AN EDGE, IT IS PARTICULARLY USED WITH A DOUBLE HOLE TO REDUCE THE PARTS WITHIN SIGHT. THE CT BUSHING CAN ALSO BE USED TO ASSEMBLE THE HOLED CAP WITH A 25 mm MINIMUM THICKNESS.

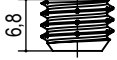




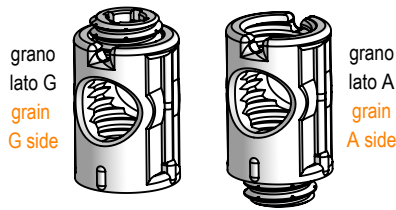
## Boccole senza testa tipo ST88 con grano assemblato Housing system without collar ST88 type with grain

Ø 14    Ø 16    zama  
zamak

PZ2-PH2

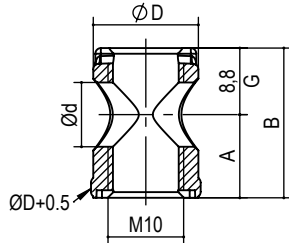


grano acciaio  
M10x7 zincato  
M10x7 zinked  
steel grain  
P.A268.007.02



grano lato G  
grain  
G side

grano lato A  
grain  
A side



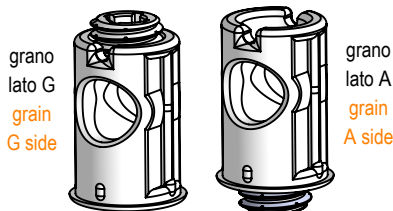
con boccole Ø14 perni Ø8    Housing Ø14 with dowels Ø8  
con boccole Ø16 perni Ø10    Housing Ø16 with dowels Ø10

tipo type	ØD	Ød	misura measure		A	B	finitura finishing	kg / 1000pz	pcs/ box	box
A.ST88G. A.ST88A.	14	8,5	14.15.	7,5	16,3	00 grezzo raw 05 ottonato brass 06 bronzato 07 nichelato	5,5	1000	B	
			14.18.	9	17,8		6,5			
			14.20.	10	18,8		7,0			
			14.22.	11	19,8		7,5			
			14.25.	12,5	21,3		8,0			
			16.22.	11	19,8		11,0			
			16.25.	12,5	21,3		12,0			
			16.30.	15	23,8		14,5			

es./e.g.: A.ST88G.14.18.00  
senza grano - without grain: P.ST88.14.18.00

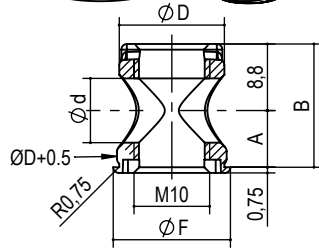
## Boccole con testa tipo CT88 con grano assemblato Housing system with collar CT88 type with grain

Ø 14    Ø 16    zama  
zamak



grano lato G  
grain  
G side

grano lato A  
grain  
A side



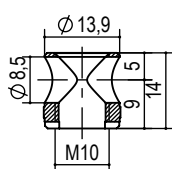
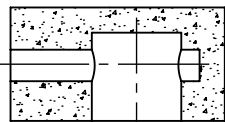
con boccole Ø14 perni Ø8    Housing Ø14 with dowels Ø8  
con boccole Ø16 perni Ø10    Housing Ø16 with dowels Ø10

tipo type	ØD	Ød	ØF	misura measure		A	B	finitura finishing	kg / 1000pz	pcs/ box	box
A.CT88G. A.CT88A.	14	8,5	15,5	14.15.	7,5	16,3	00 grezzo raw 05 ottonato brass 06 bronzato 07 nichelato	6,0	1000	B	
				14.18.	9	17,8		7,0			
				14.20.	10	18,8		7,5			
				14.22.	11	19,8		8,0			
				14.25.	12,5	21,3		8,5			
				14.28.	14	22,8		9,0			
				16.22.	11	19,8		11,5			
				16.25.	12,5	21,3		12,5			
16.30.	15	23,8	15,0								

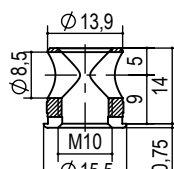
es./e.g.: A.CT88G.14.18.00  
senza grano - without grain: P.CT88.14.18.00

## Boccole per fori ciechi tipo ST50 - CT50 - ST55 - CT55 Housing system for blind hole ST50 - CT50 - ST55 - CT55 type

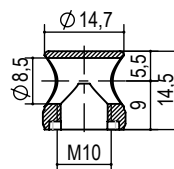
finiture a richiesta  
finishing on request



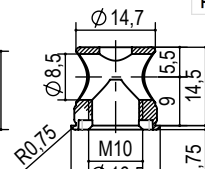
P.ST50.14.18.00



P.CT50.14.18.00



P.ST55.15.18.00



P.CT55.15.18.00

tipo type	finitura finishing	kg / 1000pz	pcs/ box	box
P.ST50	00 grezzo raw	7,3	2000	B
P.CT50	05 ottonato brass	7,9		
P.ST55	06 bronzato bronzed	7,3		
P.CT55	07 nichelato nickel	8,8		

es./e.g.: P.CT55.15.18.00  
con grano assemblato mettere A. al posto di P.  
wit assembled grain insert A. instead P.:  
A.CT55.15.18.00



## Giunzioni Connecting fittings

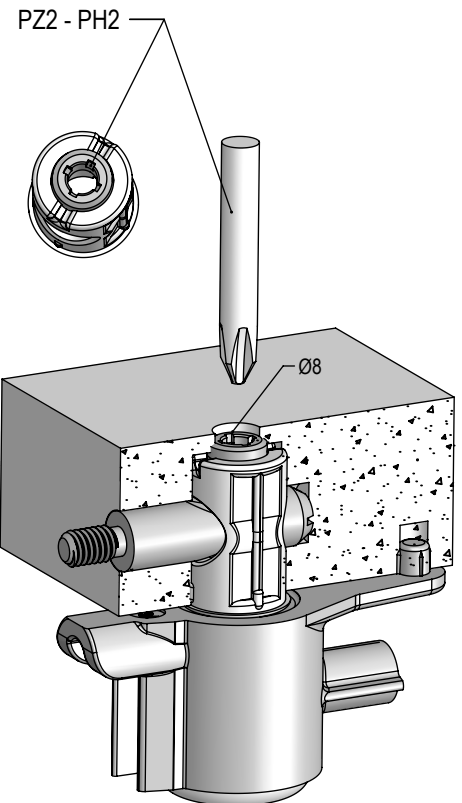
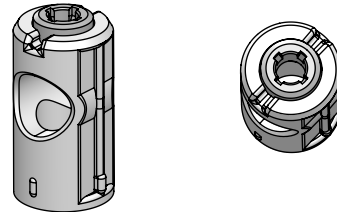
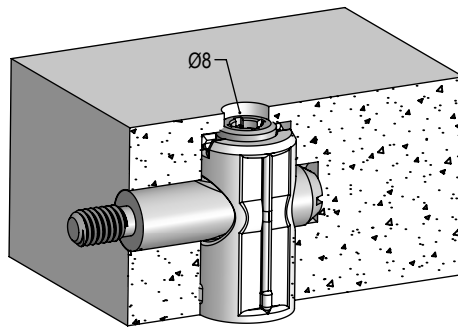
GIUNZIONE DELLA SERIE GN100GF PROGETTATA PER L'ASSEMBLAGGIO STRUTTURALE E PER ESSERE ABBINATA AI LIVELLATORI.

GN100GF PERMETTE DI AVERE IN VISTA SUL PANNELLO UN FORO DA Ø8.

GN100GF SERIES CONNECTING FITTING DESIGNED FOR STRUCTURAL ASSEMBLY AND TO BE COMBINED WITH LEVEL ADJUSTER.

WITH GN100GF IN NEUTRAL THE HOLE ON VIEW IS Ø8.

# Serie GN100F con grano folle GN100F Series with grain in neutral



- ruotando il cacciavite in senso antiorario il grano gira in folle senza uscire dal ripiano, quindi non danneggia il foro da Ø8
- turning the screwdriver in counterclockwise the grain turns in neutral without going out from the housing, in this case the grain does not damage the panel.
- ruotando il cacciavite in senso orario il grano si avvita sulla boccia.
- turning the screwdriver in clockwise the grain screws in the housing
- inserendo la chiave es.4 attraverso il grano in profondità possiamo regolare l'altezza del livellatore.
- insert hex.4 key deep through the grain to adjust the level adjuster

## Boccole tipo ST118F con grano folle assemblato

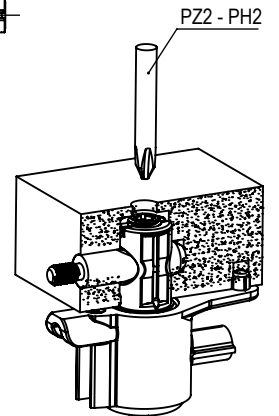
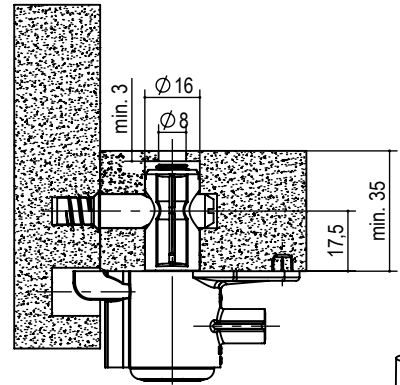
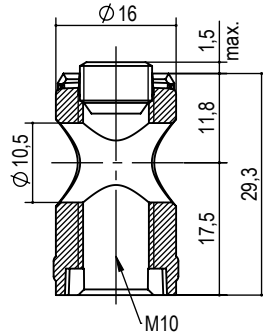
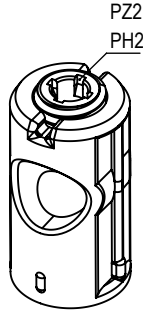
### Housing system ST118F type with assembled grain in neutral

con boccole Ø16 perni Ø10  
housing Ø16 with dowels Ø10

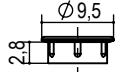
possibilità di abbinare le boccole con i vari modelli di livellatori a richiesta  
possible to combine the housings with the level adjusters

Ø 16

zama  
zamak



ACCESSORI  
ACCESORIES



tappo in zama foro Ø8  
zama cover cap Ø8 hole  
P.A458.08.00

tipo <u>type</u>	misura <u>measure</u>	finitura <u>finishing</u>	kg / 1000pz	pcs/ box	box
A.ST118F.	16.35.	00 grezzo raw	22	1000	B

es./e.g.: A.ST118F.16.35.00

## Boccole tipo CTMF con grano folle assemblato

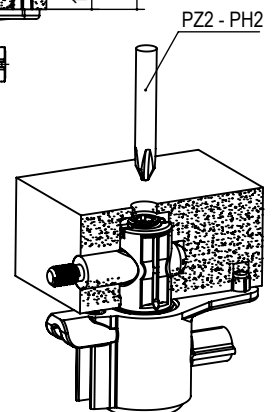
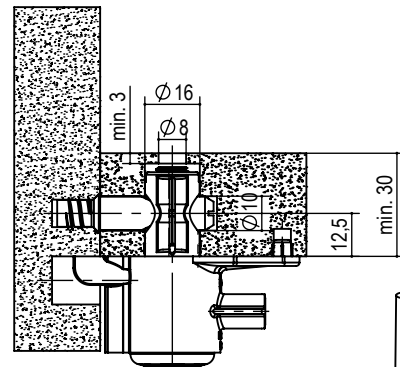
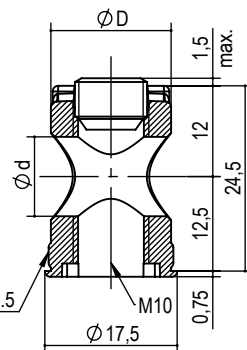
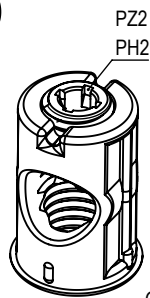
### Housing system CTMF type with assembled grain in neutral

con boccole Ø16 perni Ø10  
housing Ø16 with dowels Ø10

possibilità di abbinare le boccole con i vari modelli di livellatori a richiesta  
possible to combine the housings with the level adjusters

Ø 16

zama  
zamak



tipo <u>type</u>	misura <u>measure</u>	finitura <u>finishing</u>	kg / 1000pz	pcs/ box	box
A.CTMF.	16.25.	00 grezzo raw	19	1000	B

es./e.g.: A.CTMF.16.25.00

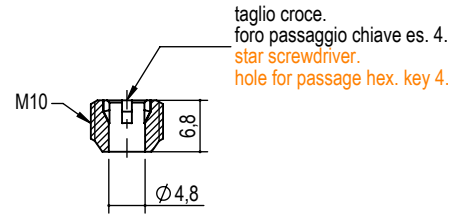


## Grani forati M10 Grains drilled M10

CARATTERIZZATO DAL FORO PASSANTE CHE PERMETTE IL PASSAGGIO DI UNA CHIAVE ES.4.  
IL TAGLIO A CROCE PERMETTE L'AVVITATURA CON CACCIAVITE A CROCE INCLINATO FINO A 30°.

CHARACTERISED BY A THROUGH HOLE THAT ALLOWS THE PASSAGE OF AN HEX. KEY 4.  
THE CROSS CUT ALLOWS SCREWING WITH A PHILLIPS SCREWDRIVER TILTED UP TO 30°.

acciaio zincato  
zinked steel



tipo <u>type</u>	misura <u>measure</u>	finitura <u>finishing</u>	kg / 1000pz	pcs/ box	box
P.A268.	007.	02 zincato bianco <b>white zinc</b> 05 ottonato <b>brass</b>	2	5000	B

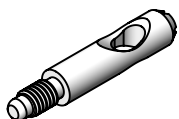
es./e.g.: P.A268.007.02

## Perni con fori asolati svasati Threaded pins with through button holes

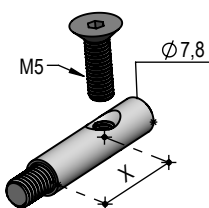
IL FORO PASSANTE ASOLATO PERMETTE IL PASSAGGIO DI UNA CHIAVE ES. 4 CONSIDERANDO LE TOLLERANZE DI LAVORAZIONE E ASSEMBLAGGIO.

THE SLOTTED THROUGH HOLE ALLOWS THE PASSAGE OF AN HEX. KEY 4 CONSIDERING THE MACHINING AND ASSEMBLING TOLERANCES.

a richiesta  
on request



es./e.g.: P.78.20.M6x12,5.PR.02



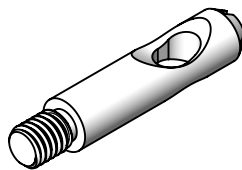
P.F78.X.M6.M5.02  
a richiesta interasse X  
interaxis distance X on request

www.omm.name  
omm@omm.name  
tel. 0362.622377

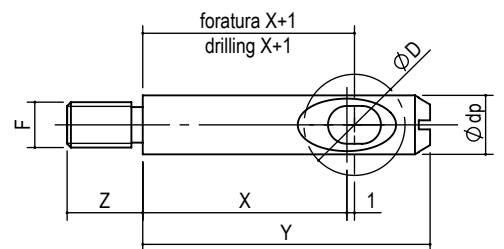
con perni Ø8 boccole Ø14 **dowels Ø8 with housing Ø14**  
con perni Ø10 boccole Ø16 **dowels Ø10 with housing Ø16**



acciaio  
steel



taglio a croce  
star screwdriver



tipo <u>type</u>	misura <u>measure</u>	ØD	Ødp	X	Y	Z	F	finitura <u>finishing</u>	kg/ 1000pz	pcs/ box	box			
P.78.	20.M6x8.	14	7,8	20	31	8	M6	02 zincato bianco <b>white z</b>	10,2	2000	B			
	27.M6x8.			27	38									
	30.M6x8.			30	41									
P.98.	20.M6x10.	16	9,8	20	33	10	02 zincato bianco <b>white z</b>					16,1	1000	B
	27.M6x10.			27	40									
	30.M6x10.			30	43									

es./e.g.: P.78.20.M6.02

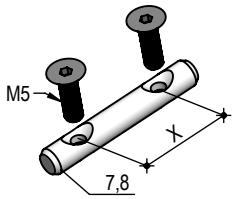


## Perni con fori asolati svasati passanti Pins with through slotted holes flared

IL FORO PASSANTE ASOLATO PERMETTE IL PASSAGGIO DI UNA CHIAVE ES. 4 CONSIDERANDO LE TOLLERANZE DI LAVORAZIONE E ASSEMBLAGGIO.

THE SLOTTED THROUGH HOLE ALLOWS THE PASSAGE OF AN HEX. KEY 4 CONSIDERING THE MACHINING AND ASSEMBLING TOLERANCES.

a richiesta  
on request



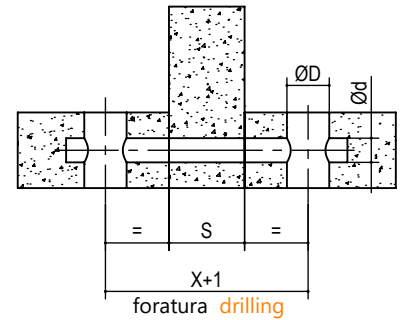
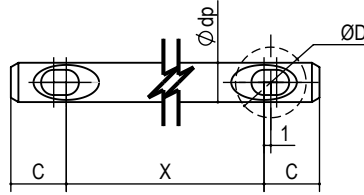
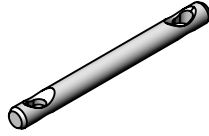
P.A367.28.02

a richiesta interasse X  
interaxis distance X on request

con perni Ø8 boccole Ø14 dowels Ø8 with housing Ø14  
con perni Ø10 boccole Ø16 dowels Ø10 with housing Ø16



acciaio  
steel



foratura drilling

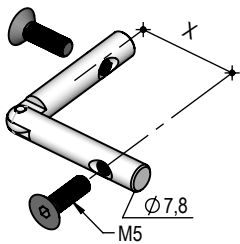
tipo type	misura measure	ØD	Ødp	Ød	X	S	C	finitura finishing	kg/ 1000pz	pcs/ box	box	
P.P78.	041.	14	7,8	8	41	0		02 zincato bianco white zinc	18	1000	B	
	059.				59	18			11	26		500
	066.				66	25				29		500
P.P98.	041.	16	9,8	10	41	0	13		30	500		
	066.				66	25			44	500		
	071.				71	30			50	500		
	081.				81	40		58	500			

es/e.g.: P.P78.066.02

su richiesta altre misure di interasse "X"  
other wheel base "X" on request

## Perni angolari con fori asolati svasati passanti Corner pins with through slotted holes flared

a richiesta  
on request

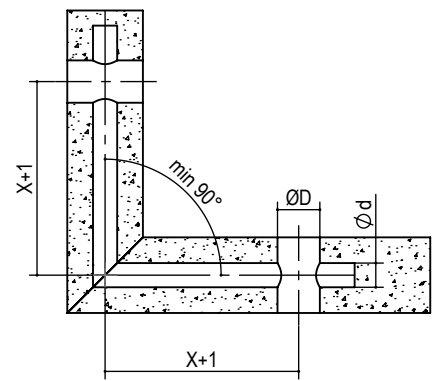
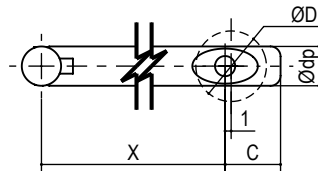
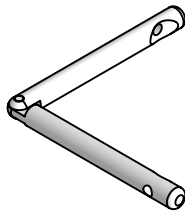


a richiesta interasse X  
interaxis distance X on request

con perni Ø8 boccole Ø14 dowels Ø8 with housing Ø14  
con perni Ø10 boccole Ø16 dowels Ø10 with housing Ø16



acciaio  
steel



foratura/drilling

tipo type	misura measure	ØD	Ødp	Ød	X	C	finitura finishing	kg / 1000pz	pcs/ box	box
NG.78.	64.	14	7,8	8	64	11	02 zincato bianco white zinc	56,4	500	B
NG.98.	65.	16	9,8	10	65	13		84	250	

es/e.g.: NG.78.64.02

su richiesta altre misure di interasse "X"  
other wheel base "X" on request



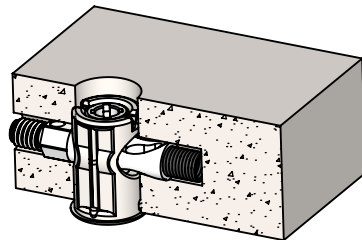


## Perni con molla per assemblaggio in nicchia Dowels with spring for recess assembly

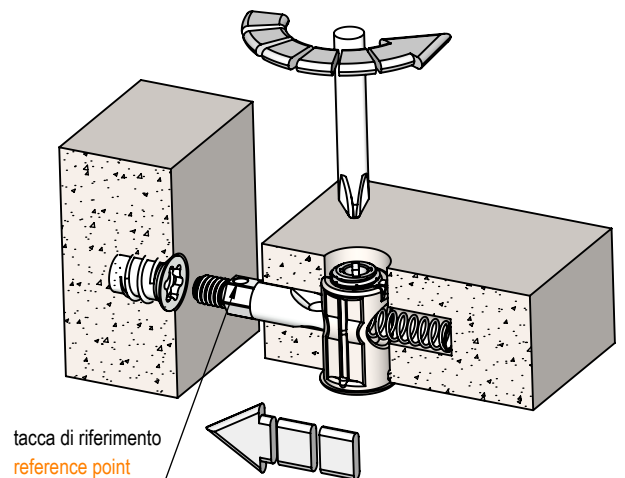
CARATTERIZZATO DALLA MOLLA CHE PERMETTE DI AVERE I PERNI PREINSERITI NEL PANNELLO. CON FORO PASSANTE CHE PERMETTE LA REGOLAZIONE DEL LIVELLATORE CON CHIAVE ES.4.

CHARACTERISED BY A SPRING THAT ALLOWS TO HAVE DOWELS ALREADY ENTERED IN THE PANEL HOLE THAT ALLOWS THE PASSAGE OF AN HEX. KEY 4 FOR ADJUST THE LEVEL ADJUSTER.

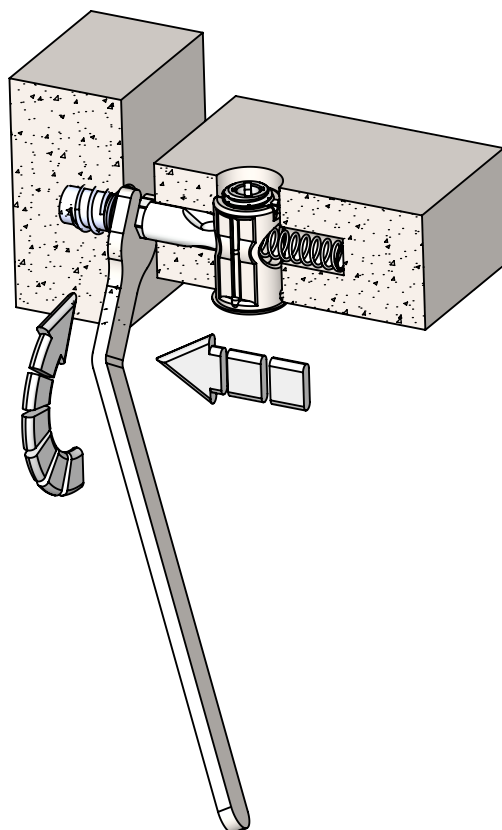
- 1 - perno bloccato a filo all'interno del pannello.  
dowel lock inside in the panel.



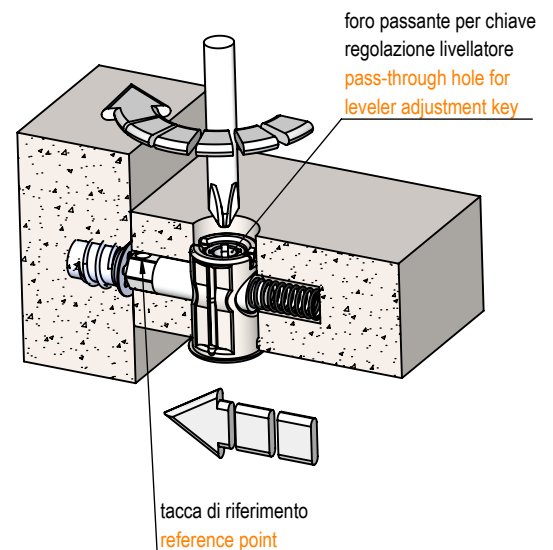
- 2 - svitando il grano il perno esce e può essere avvitato nella bussola.  
unscrew the grain, the dowel come out and it can be screwed with the bushing.



- 3 - avvitare il perno con la chiave in dotazione, portando la tacca di riferimento verso l'alto.  
screw the dowel with the supplied key, with the reference mark upward.



- 4 - stringere il grano per unire i pannelli.  
tie the grain to connect the panels.





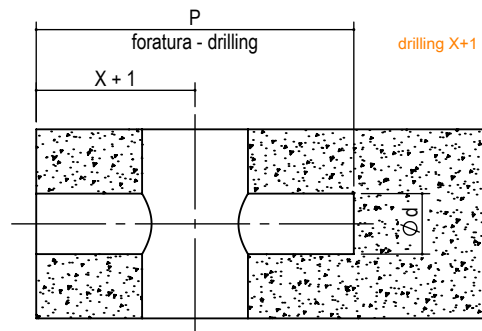
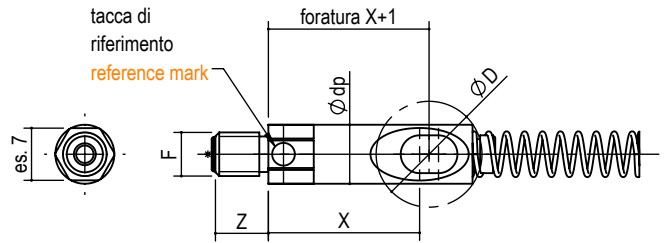
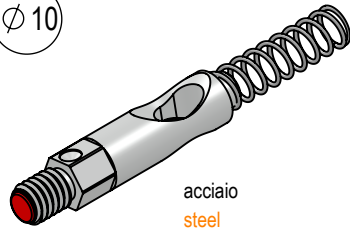
# Perni con molla

## Dowels with spring

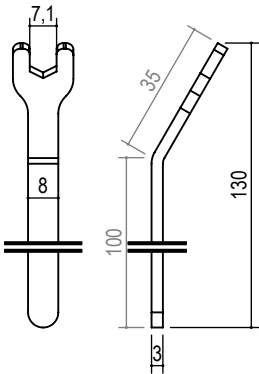
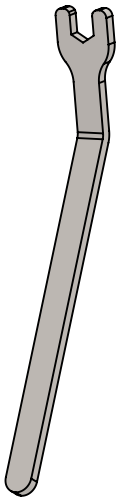
CARATTERIZZATO DALLA MOLLA CHE PERMETTE DI AVERE I PERNI PRE-INSERITI NEL PANNELLO. CON FORO PASSANTE CHE PERMETTE LA REGOLAZIONE DEL LIVELLATORE CON CHIAVE ES.4.

CHARACTERISED BY A SPRING THAT ALLOWS TO HAVE DOWELS ALREADY ENTERED IN THE PANEL HOLE THAT ALLOWS THE PASSAGE OF AN HEX. KEY 4 FOR ADJUST THE LEVEL ADJUSTER.

perni Ø8 boccole Ø14 **dowels Ø8 with housing Ø14**  
 perni Ø10 boccole Ø16 **dowels Ø10 with housing Ø16**



ACCESSORI  
ACCESSORIES



chiave es. 7  
wrench key 7

cod: P.CH7.PM.135.02

tipo type	misura measure	Ødp	X	Z	F	d	P	finitura finishing	kg/ 1000pz	pcs/ box	box
A.PM.	78.20.M6.	7,8	20	7	M6	8	40	02 zincato bianco white zinc	9,8	1000	B
	98.20.M6.	9,8	20	7	M8	10	42		14,1	1000	
	98.20.M8.		20	7					14,2	1000	

es/e.g.: A.PM.78.20.M6.02



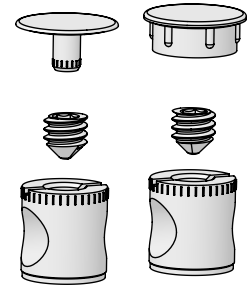
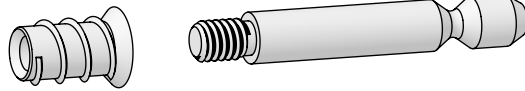
## Giunzioni Connecting fittings

GIUNZIONE DELLA SERIE GN110  
PERMETTE DI APPLICARE  
GIUNZIONI STRUTTURALI ANCHE  
A PANNELLI DI SPESSORE  
RIDOTTO.

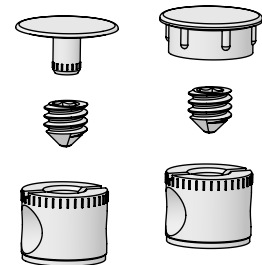
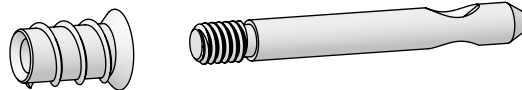
THE GN110 SERIES CONNECTING  
FITTING ALLOWS THE  
APPLICATION OF STRUCTURAL  
CONNECTING FITTINGS EVEN ON  
PANELS WITH REDUCED  
THICKNESS.

# Serie GN110 GN110 Series

GN111



GN112

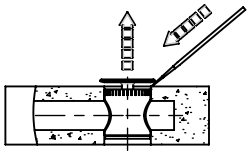


## Esempi di applicazioni boccole serie GN110

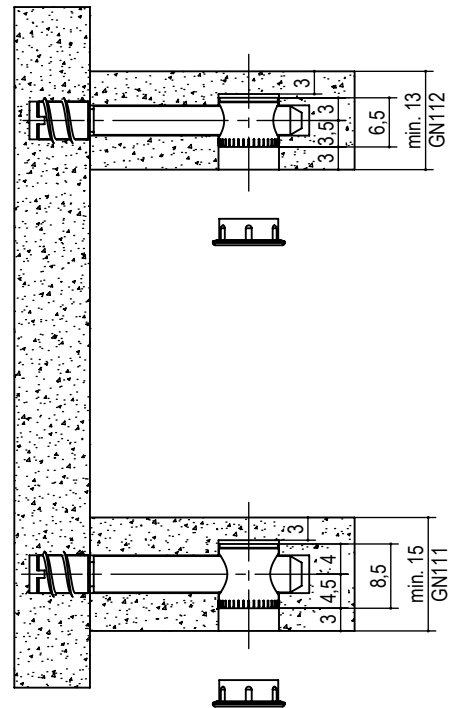
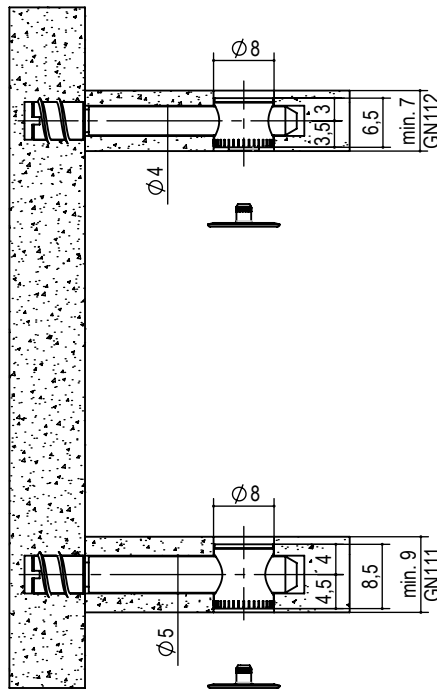
### Application examples housing GN110 series

Con boccole ST112 Ø8x6,5 foro passante, spessore min. 7  
 With housing ST112 Ø8x6,5 through hole, min. thickness 7  
 Con boccole ST111 Ø8x8,5 foro passante, spessore min. 9  
 With housing ST111 Ø8x8,5 through hole, min. thickness 9

Con boccole ST112 Ø8x6,5 foro cieco, spessore min. 13  
 With housing ST112 Ø8x6,5 blind hole, min. thickness 13  
 Con boccole ST111 Ø8x8,5 foro cieco, spessore min. 15  
 With housing ST111 Ø8x8,5 blind hole, min. thickness 15



SMONTAGGIO TAPPO  
COVER CUP REMOVAL





## Boccola ST111 Ø8 Housing ST111 Ø8

GIUNZIONE TIPO GN111 PERMETTE DI APPLICARE GIUNZIONI STRUTTURALI ANCHE A PANNELLI DI SPESSORE DA 7 mm.

LE DIMENSIONI RIDOTTE NE MIGLIORANO L'IMPATTO ESTETICO. LA REALIZZAZIONE IN ACCIAIO GARANTISCE ALTA RESISTENZA. SONO DISPONIBILI TAPPI DI COPERTURA.

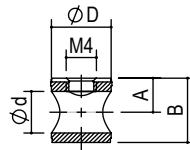
THE GN111 TYPE CONNECTING FITTING ALLOWS THE APPLICATION OF STRUCTURAL CONNECTING FITTINGS EVEN ON PANELS WITH REDUCED FROM 7 mm.

THE REDUCED SIZES IMPROVE THE AESTHETIC IMPACT. THE STEEL MAKING ENSURES RESISTANCE. COVER CAPS ARE AVAILABLE.

boccola Ø8 - housing Ø8



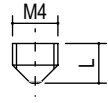
acciaio  
steel



grano - grain



esagono 2  
hexagon 2  
acciaio  
steel



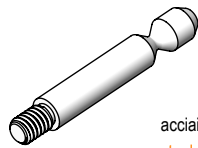
tipo type	ØD	misura measure	Ød	A	B	finitura finishing	kg / 1000pz	pcs/ box	box
P.ST111.	Ø8.	8,5	5,5	4,5	8,5	02 zincato bianco white zinc	1,4	5000	B

es/e.g.: P.ST111.08.8.5.02

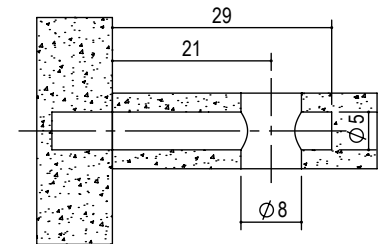
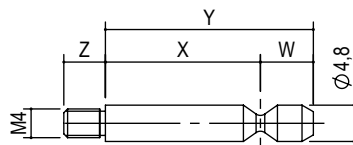
tipo type	misura measure	L	finitura finishing	kg / 1000pz	pcs/ box	box
P.G150.	05.3.5.	3,5	01 brunito brushed	0,2	1000	A

es/e.g.: P.G150.05.3.5.01

## Perni P.111 Ø5 Dowels P.111 Ø5



acciaio  
steel



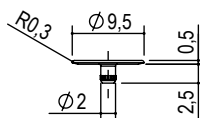
tipo type	misura measure	X	Y	Z	W	finitura finishing	kg / 1000pz	pcs/ box	box
P.111.	05.20,5.	20,5	27,5	5,5	7	02 zincato bianco white zinc	3,9	2500	B

es/e.g.: P.111.05.20,5.02

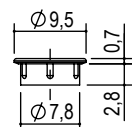
## Tappi T.110 Caps T.110



ottone  
brass



zama  
zamak



tipo type	Ø bussola Ø housing	finitura finishing	kg / 1000pz	pcs/ box	box
P.T110.	Ø8	05 ottonato brass 06 bronzato bronze 07 nichelato nikel 53 nero black	0,36	5000	B

es/e.g.: P.T110.08.07

tipo type	Ø bussola Ø housing	finitura finishing	kg / 1000pz	pcs/ box	box
P.A458.	Ø8	05 ottonato brass 06 bronzato bronze 07 nichelato nikel 53 nero black	1,2	5000	B

es/e.g.: P.A458.08.07



# Boccola ST111 Ø8

## Housing ST111 Ø8

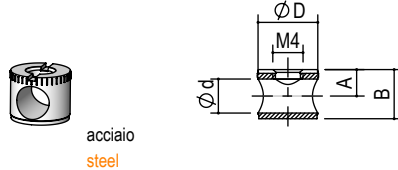
GIUNZIONE TIPO GN112  
PERMETTE DI APPLICARE  
GIUNZIONI STRUTTURALI ANCHE  
A PANNELLI DI SPESSORE 9 mm.

LE DIMENSIONI RIDOTTE NE  
MIGLIORANO L'IMPATTO  
ESTETICO.  
LA REALIZZAZIONE IN ACCIAIO  
GARANTISCE ALTA RESISTENZA.  
SONO DISPONIBILI TAPPI DI  
COPERTURA.

THE GN112 TYPE CONNECTING  
FITTING ALLOWS THE  
APPLICATION OF STRUCTURAL  
CONNECTING FITTINGS EVEN  
ON PANELS WITH REDUCED  
FROM 9 mm.

THE REDUCED SIZES IMPROVE  
THE AESTHETIC IMPACT. THE  
STEEL MAKING ENSURES  
RESISTANCE.  
COVER CAPS ARE AVAILABLE.

boccola Ø8 - housing Ø8



acciaio  
steel

grano - grain



acciaio  
steel

tipo <u>type</u>	ØD	Ød	misura <u>measure</u>	A	B	finitura <u>finishing</u>	kg / 1000pz	pcs/ box	box
P.ST112.	08.	4,5	07	3,5	6,5	02 zincato bianco white zinc	1,4	5000	B

es/e.g.: P.ST112.08.07.02

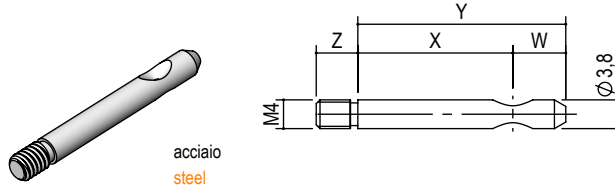
tipo <u>type</u>	misura <u>measure</u>	L	finitura <u>finishing</u>	kg / 1000pz	pcs/ box	box
P.G150.	05.4.	3,5	01 brunito brunished	0,2	1000	A

es/e.g.: P.G150.05.4.01

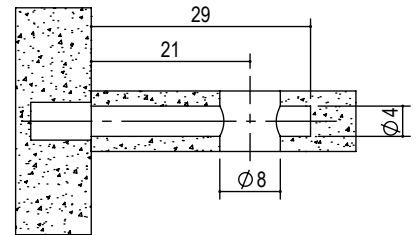
# Perni Ø4

## Dowels Ø4

perni Ø4 - dowels Ø4



acciaio  
steel

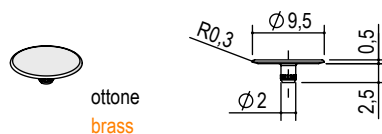


tipo <u>type</u>	misura <u>measure</u>	X	Y	Z	W	finitura <u>finishing</u>	kg / 1000pz	pcs/ box	box
P.112.	04.20,5.	20,5	27,5	5,5	7	02 zincato bianco white zinc	3,9	2500	B

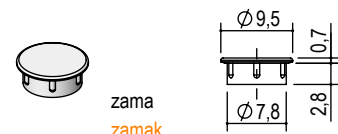
es/e.g.: P.112.04.20,5.02

# Tappi

## Caps



ottone  
brass



zama  
zamak

tipo <u>type</u>	Ø bussola <u>Ø housing</u>	finitura <u>finishing</u>	kg / 1000pz	pcs/ box	box
P.T110.	08	05 ottonato brass 06 bronzato bronze 07 nichelato nikel 53 nero black	0,36	5000	B

es/e.g.: P.T110.08.07

tipo <u>type</u>	Ø bussola <u>Ø housing</u>	finitura <u>finishing</u>	kg / 1000pz	pcs/ box	box
P.A458.	08	05 ottonato brass 06 bronzato bronze 07 nichelato nikel 53 nero black	1,2	5000	B

es/e.g.: P.A458.08.07



## Giunzioni Connecting fittings

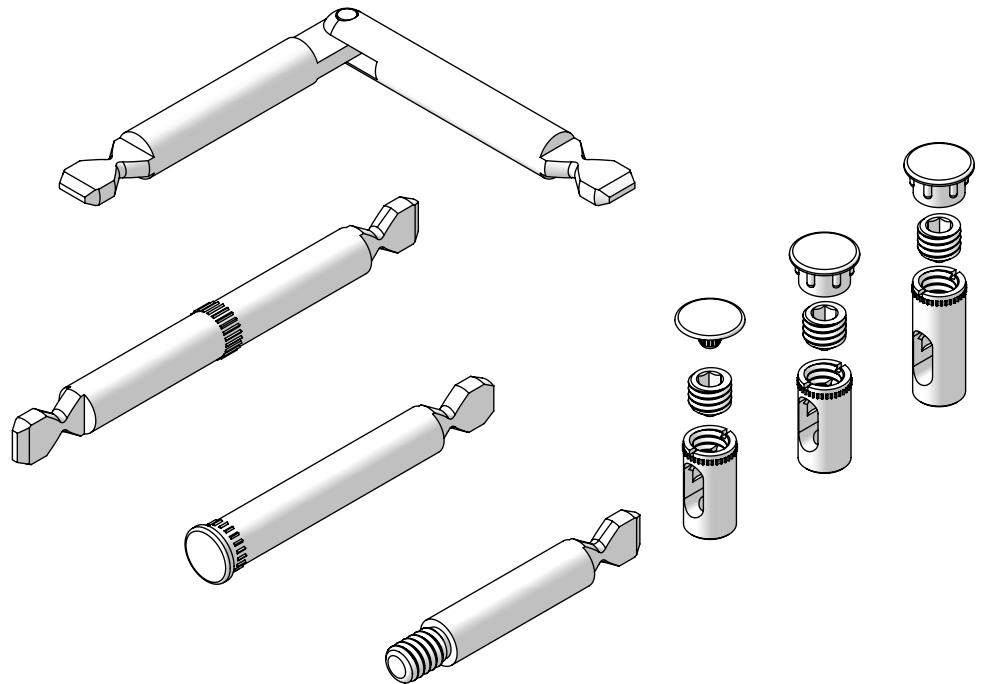
GIUNZIONE DELLA SERIE GN150  
PERMETTE DI APPLICARE  
GIUNZIONI STRUTTURALI ANCHE  
A PANNELLI DI SPESSORE  
RIDOTTO MIN. 10.

LE DIMENSIONI RIDOTTE NE  
MIGLIORANO L'IMPATTO  
ESTETICO.  
LA REALIZZAZIONE IN ACCIAIO  
GARANTISCE LA RESISTENZA.  
SONO DISPONIBILI TAPPI DI  
COPERTURA.

THE GN150 SERIES CONNECTING  
FITTING ALLOWS THE  
APPLICATION OF STRUCTURAL  
CONNECTING FITTINGS EVEN ON  
PANELS WITH REDUCED  
THICKNESS MIN. 10.

THE REDUCED SIZES IMPROVE  
THE AESTHETIC IMPACT. THE  
STEEL MAKING ENSURES  
RESISTANCE. COVER CAPS ARE  
AVAILABLE.

# Serie GN150 GN150 Series



## Esempi di applicazioni boccole serie GN150

### Application examples housing GN150 series

BOCCOLA ST: CARATERIZZATA DALL'ESSERE SENZA BORDO E PER FORO NON PASSANTE. SPESSORE MINIMO DEL PANNELLO =12,5

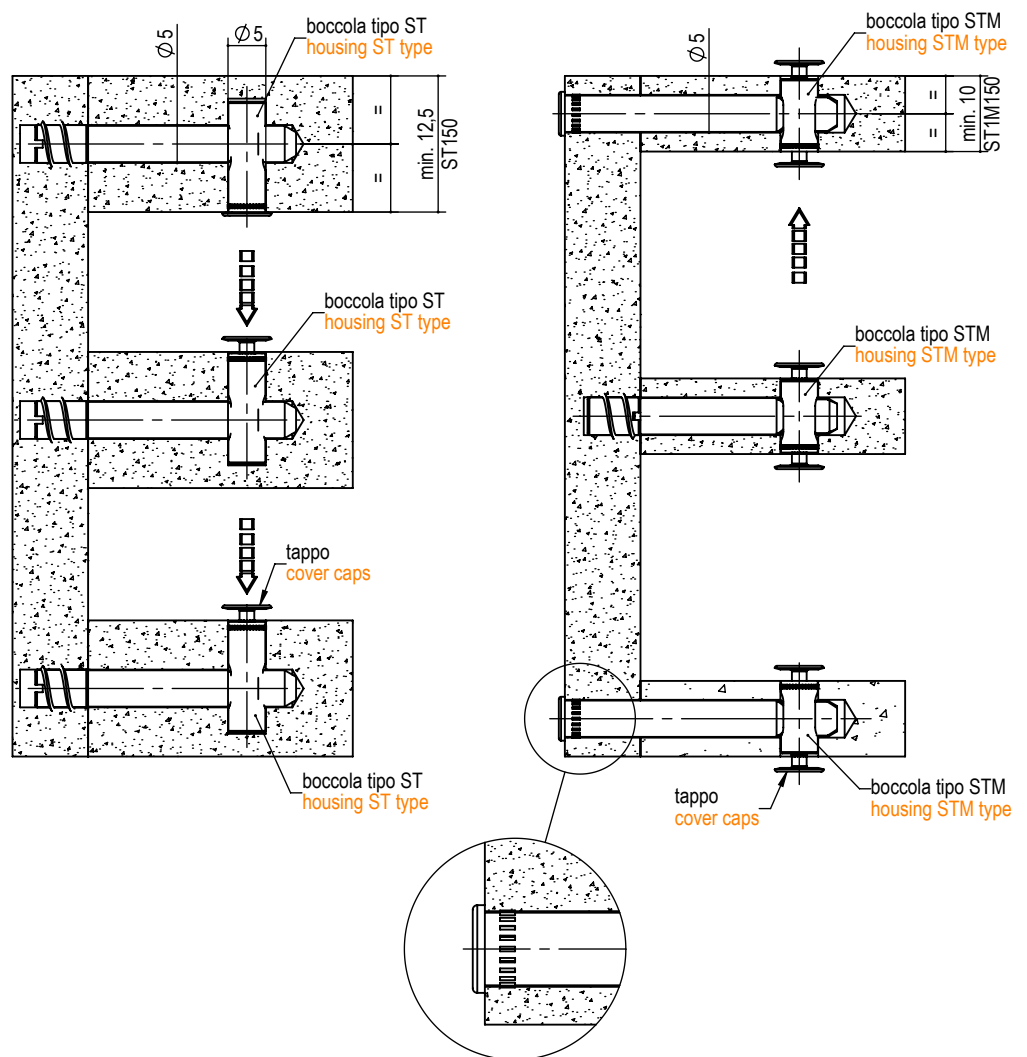
BOCCOLA STM: CARATTERIZZATA DALL'ESSERE SENZA BORDO E DI LUNGHEZZA PARI ALLO SPESSORE DEL PANNELLO. SPESSORE MINIMO DEL PANNELLO =10.

ST HOUSING: CHARACTERISED BY BEING EDGELESS AND WITHOUT A THROUGH TYPE HOLE. MINIMUM PANEL THICKNESS = 12.5

STM HOUSING: CHARACTERISED BY BEING EDGELESS AND WITH A LENGTH EQUAL TO THE THICKNESS OF THE PANEL. MINIMUM PANEL THICKNESS = 10.

Con boccole ST Ø5 mm spessore min. 12,5  
With housing ST Ø5 mm min. thickness 12,5  
Con boccole ST Ø8 mm spessore min. 14  
With housing ST Ø8 mm min. thickness 14

Con boccole STM Ø5 mm spessore min. 10  
With housing STM Ø5 mm min. thickness 10  
Con boccole STM Ø8 mm spessore min. 14  
With housing STM Ø8 mm min. thickness 14





## Boccole tipo ST150 Housing ST150 type

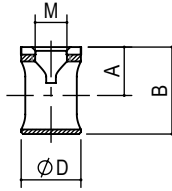
BOCCOLA ST: CARATTERIZZATA DALL'ESSERE SENZA BORDO. PER FORO NON PASSANTE. SPESSORE MIN. DEL PANNELLO 12,5

ST BUSHING: CHARACTERISED BY BEING EDGELESS. FOR NON-THROUGH HOLE. MINIMUM PANEL THICKNESS 12.5



acciaio  
steel

boccole Ø5 con grano M4 e perni Ø5 housing Ø5 with dowels Ø5  
boccole Ø8 con grano M5 e perni Ø8 housing Ø8 with dowels Ø8



tipo type	ØD	misura measure	A	B	M	finitura finishing	kg / 1000pz	pcs/ box	box
P.ST150.	5	05.12.5.	6,25	9,6	4	02 zincato bianco white zinc	0,7	3000	B
		05.14.	7	10,6			0,8	3000	
		05.16.	8	12,6			1,0	3000	
		05.18.	9	14,6			1,2	3000	
	8	08.18.	9	14,5	5		3,0	3000	
		08.20.	10	16,5			3,6	3000	
		08.22.	11	18,5			4,2	3000	
		08.25.	12,5	21,5			5,2	3000	
		08.30.	15	27,5			6,8	3000	

es./e.g.: P.ST150.08.18.02

## Boccole tipo STM150 Housing STM150 type

BOCCOLA STM: CARATTERIZZATA DALL'ESSERE SENZA BORDO E DI LUNGHEZZA PARI ALLO SPESSORE DEL PANNELLO.

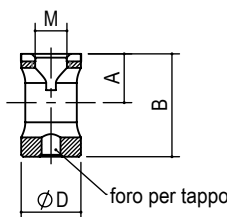
SPESSORE MINIMO DEL PANNELLO =10. IL FORO SUL LATO OPPOSTO DEL GRANO PERMETTE L'ASSEMBLAGGIO DEL TAPPO (VEDI PAGINA GRANI E TAPPI).

STM BUSHING: CHARACTERISED BY BEING EDGELESS AND WITH A LENGTH EQUAL TO THE THICKNESS OF THE PANEL. MINIMUM PANEL THICKNESS 10 THE HOLE ON THE OPPOSITE SIDE OF THE GRAIN ALLOWS CAP ASSEMBLY (SEE GRAINS AND CAPS PAGE).



acciaio  
steel

boccole Ø5 grano M4 e perni Ø5 housing Ø5 with dowels Ø5  
boccole Ø8 grano M5 e perni Ø8 housing Ø8 with dowels Ø8



tipo type	ØD	misura measure	A	B	M	finitura finishing	kg / 1000pz	pcs/ box	box
P.STM150.	5	05.10.	5	9,6	4	02 zincato white zinc	1	5000	B
	8	08.14.	7	13,6	5		3	5000	
		08.18.	9	17,6			4	5000	

es./e.g.: P.STM150.05.10.02

# Perni con punta a lancia filettati

## Dowels with spear point pins

ACCESSORI  
ACCESSORIES

i perni Ø5 con le boccole Ø5 **dowels Ø5 with housing Ø5**  
i perni Ø8 con le boccole Ø8 **dowels Ø8 with housing Ø8**

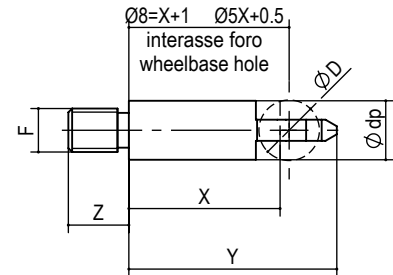
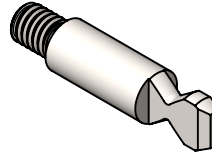
filetto femmina M4  
**M4 female thread**  
C.A096.6x10.M4.02

filetto femmina M6  
**M6 female thread**  
P.TS.08.M6X12,5.00

vedere tabella bussole  
nella pagina accessori  
**see housings table on  
the accessories page**



acciaio  
**steel**



tipo <b>type</b>	misura <b>measure</b>	ØD	Ødp	X	Y	Z	F	finitura <b>finishing</b>	kg / 1000pz	pcs/ box	box
P.150.	05.20.5.	5	4,8	20,5	26	5,5	M4	02 zincato bianco <b>white zinc</b>	3,4	2000	B
	05.23.5.			23,5	29				3,8	2000	
	08.20.	8	7,8	20	27,5	8	M6		8,6	2000	
	08.23.			23	30,5				9,7	2000	

es/e.g.: P.150.05.20,5.02

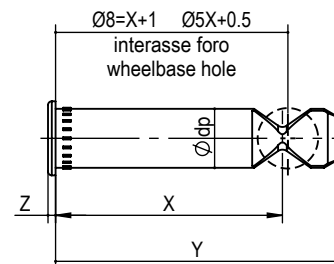
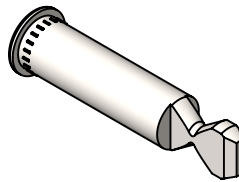
# Perni con punta a lancia con testa

## Dowels with spear point pins with head

i perni Ø5 con le boccole Ø5 **dowels Ø5 with housing Ø5**  
i perni Ø8 con le boccole Ø8 **dowels Ø8 with housing Ø8**



acciaio  
**steel**



tipo <b>type</b>	misura <b>measure</b>	ØD	Ødp	X	Y	Z	E	finitura <b>finishing</b>	kg / 1000pz	pcs/ box	box
P150.	T05.30.5.	5	4,8	30,5	36	0,8	6,5	02 zincato bianco <b>white zinc</b>	4,7	2000	B
	T05.33.5.			33,5	39				5,1	2000	
	T08.30.	8	7,8	30	37,5	1	9,5		11,7	2000	
	T08.33.			33	40,5				12,8	2000	

es/e.g.: P150.T05.30,5.02

# Perni passanti

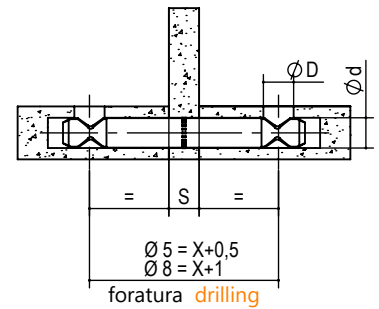
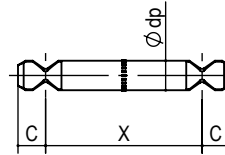
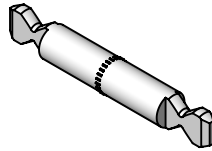
## Double dowels

i perni Ø5 con le boccole Ø5 dowels Ø5 with housing Ø5  
 i perni Ø8 con le boccole Ø8 dowels Ø8 with housing Ø8

Ø5

Ø8

acciaio  
steel



tipo type	misura measure	ØD	Ød	Ødp	X	S	C	finitura finishing	kg / 1000pz	pcs/ box	box
P.150.	P05.041.	5	5	4,8	41,5	0	5,5	02 zincato bianco white zinc	5,9	2000	B
	P05.049.5.				41,5	8			7	2000	
	P08.041.	8	8	7,8	41	0	15,4		1000		
	P08.049.				41	8	18,3		1000		

es./e.g.: P.150.P05.049,5.02

su richiesta altre misure di interesse "X"  
other measure "X" on request

# Perni angolari

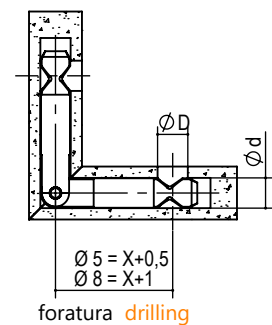
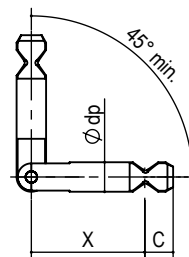
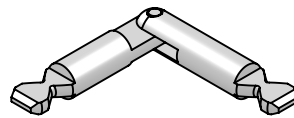
## Corner dowels

i perni Ø5 con le boccole Ø5 dowels Ø5 with housing Ø5  
 i perni Ø8 con le boccole Ø8 dowels Ø8 with housing Ø8

Ø5

Ø8

acciaio  
steel



tipo type	misura measure	ØD	Ød	Ødp	X	C	finitura finishing	kg / 1000pz	pcs/ box	box
NG150.	05.30.5.	5	5	4,8	30,5	5,5	02 zincato bianco white zinc	8,3	2000	B
	08.30.							8	8	

es./e.g.: NG150.05.30,5.02

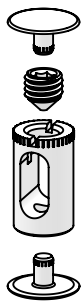
su richiesta altre misure di interesse "X"  
other measure "X" on request



## Grani Grains

I GRANI HANNO UNA LUNGHEZZA IN BASE ALL'ALTEZZA DELLA BOCCOLA E ALLO SPESSORE DEL PIANO IN MODO DA POTER FISSARE IL TAPPO DI FINITURA. CON LA BUSSOLA STM IL TAPPO PUO' ESSERE ASSEMBLATO ANCHE SUL LATO OPPOSTO.

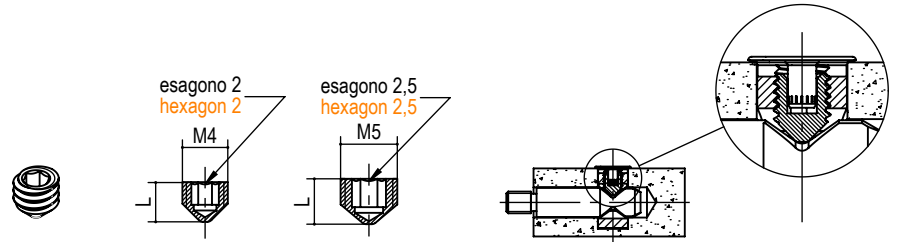
GRAINS HAVE A SPECIFIC LENGTH DEPENDING ON THE HEIGHT OF THE BUSHING AND THE THICKNESS OF THE SURFACE SO AS TO FIX THE FINISH CAP. IN THE STM TYPE BUSHINGS THE CAP CAN ALSO BE FITTED ON THE OPPOSITE SIDE.



i grani M4 con le boccole Ø5 grains M4 with housing Ø5  
i grani M5 con le boccole Ø8 grains M5 with housing Ø8



acciaio  
steel



tipo type	spess. piano panell thickness	Ø bussola Ø housing	misura measure	M	L	finitura finishing	kg / 1000pz	pcs/ box	box
P.G150.	10	05	05.04.	4	4	01 brunito - burnished	0,2	5000	B
	12		05.05.		5		0,3	5000	
	14		05.06.		6		0,4	5000	
	18		05.08.		8		0,5	5000	
	22		05.10.		10		0,6	5000	
	12	08	08.04.	4	0,4		5000		
	14		08.05.	5	0,7		5000		
	16		08.06.	6	1		5000		
	20		08.08.	8	1,2		5000		
	25		08.10.	10	1,6		5000		
	30		08.12,5	12,5	1,8		5000		

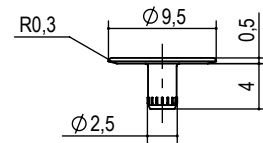
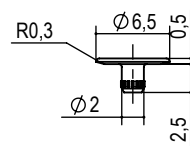
es/e.g.: P.G150.08.8.01

## Tappi Covers cap

I tappi Ø6.5 con le boccole Ø5 M4 grains and covers 6,5 with housing 5  
I tappi Ø9.5 con le boccole Ø8 M5 grains and covers 9,5 with housing 8



ottone  
brass



tipo type	Ø bussola Ø housing	finitura finishing	kg / 1000pz	pcs/ box	box
P.T150.	05.	00 ottone brass	0,17	5000	B
		06 bronzato bronze			
	08.	07 nichelato nickel	0,36	5000	

es/e.g.: P.T150.08.07



## Giunzioni Connecting fittings

# Serie GN200 GN200 Series

GIUNZIONE DELLA SERIE GN200 PROGETTATA PER L'ASSEMBLAGGIO E PER ESSERE ABBINATA AI LIVELLATORI.

DETTAGLIO A: BOCCOLA ECCENTRICA CARATTERIZZATA DALL' AVERE FORO PASSANTE CHE PERMETTE IL PASSAGGIO DI UNA CHIAVE ES 4.

DETTAGLIO B: MOSTRA LA CHIAVE ESAGONALE 4 PASSANTE ATTRAVERSO LA GIUNZIONE PER LA REGOLAZIONE DEL LIVELLATORE.

DETTAGLIO C: MOSTRA GLI ULTIMI 30° DI ROTAZIONE, NEI QUALI CI SONO INCREMENTI DECIMALI DELLA "TIRATA" IN MODO DA GARANTIRE L'EFFETTO DI ANTIROTAZIONE.

DETTAGLIO D: OSSERVARE LA GRANDE SUPERFICIE DI SPINTA A GARANZIA DELLA TENUTA.

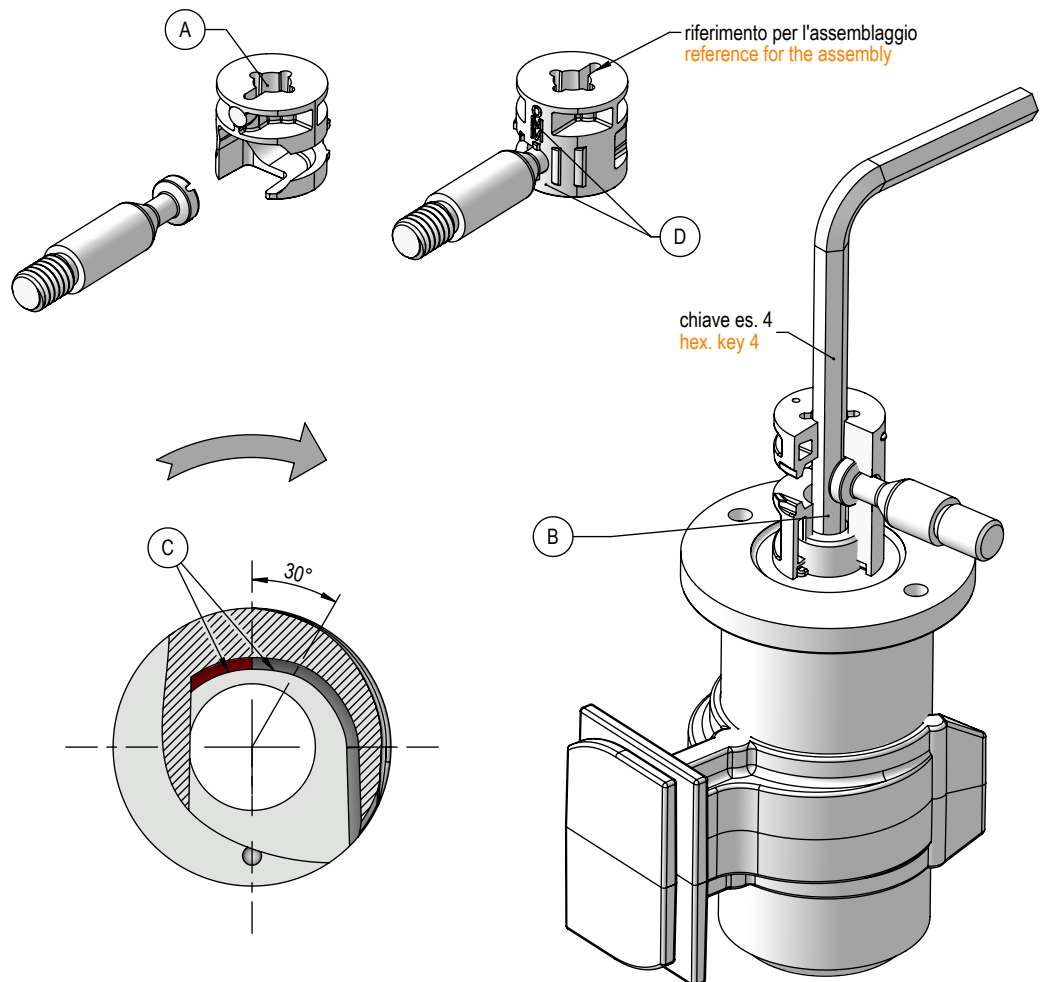
GN200 SERIES CONNECTING FITTING DESIGNED FOR ASSEMBLY AND TO BE COMBINED WITH LEVEL ADJUSTERS.

DETAIL A: ECCENTRIC HOUSING CHARACTERISED BY HAVING A THROUGH HOLE THAT ALLOWS THE PASSAGE OF AN HEX. KEY 4.

DETAIL B: SHOWS THE HEX. KEY 4 PASSING THROUGH THE CONNECTING FITTING FOR THE ADJUSTMENT OF THE LEVEL ADJUSTER.

DETAIL C: SHOWS LAST 30° ROTATION, IN WHICH THERE ARE DECIMAL INCREASES OF THE "TIGHTENING" TO ENSURE THE ANTI-ROTATION EFFECT.

DETAIL D: OBSERVE THE HUGE THRUST SURFACE TO ENSURE HOLD.





## Esempi di applicazioni boccole serie GN200 Application examples housing GN200 series

BOCCOLA EST:  
CARATTERIZZATA  
DALL'ESSERE SENZA BORDO.  
NORMALMENTE UTILIZZATA  
NELLA PARTE SUPERIORE IN UN  
FORO CIECO.

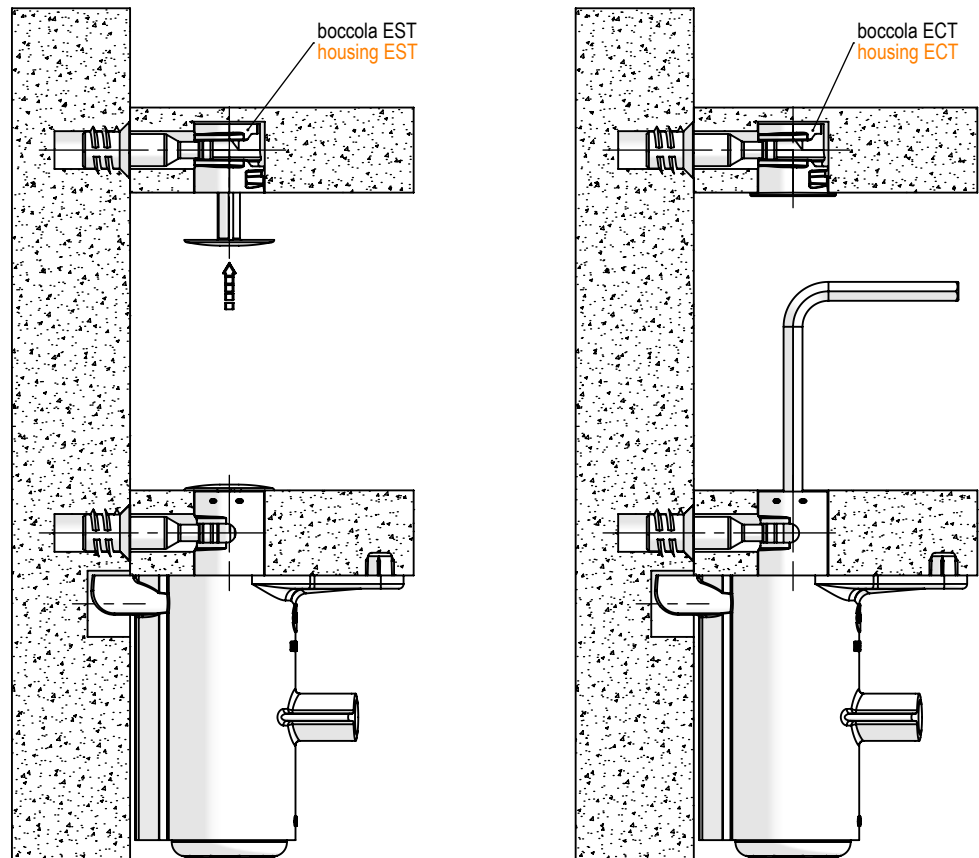
BOCCOLA ECT:  
CARATTERIZZATA DALL'ESSERE  
CON BORDO.  
NORMALMENTE UTILIZZATA  
NELLA PARTE SUPERIORE IN UN  
FORO CIECO.

ESSENDO IL RIFERIMENTO DI  
ASSEMBLAGGIO DI MINIMO  
IMPATTO ESTETICO LA  
VERSIONE NICHELATA PUO'  
ESSERE ASSEMBLATA SENZA IL  
TAPPO, ANCHE SE DISPONIBILE.

EST HOUSING: CHARACTERISED  
BY BEING EDGELESS.  
NORMALLY USED AT THE TOP IN  
A BLIND HOLE.

ECT HOUSING: CHARACTERISED  
BY BEING WITH EDGE.  
NORMALLY USED AT THE TOP IN  
A BLIND HOLE.

BEING THE ASSEMBLY  
REFERENCE OF MINIMUM  
AESTHETIC IMPACT, THE NICKEL-  
PLATED VERSION CAN BE  
ASSEMBLED WITHOUT THE CAP,  
EVEN IF AVAILABLE.



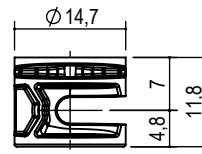
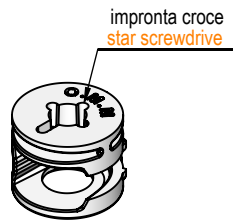
## Boccole tipo EST70 Housing EST70 type

BOCCOLA ECCENTRICA PER  
GIUNZIONE RIPIANI

ECCENTRIC BUSHING FOR  
SHELVES JUNCTION



zama  
zamak



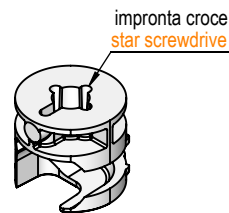
tipo type	misura measure	finitura finishing	kg/ 1000pz	pcs/ box	box
P.EST70.15.	14.	00 grezzo raw	6,5	2000	B
		05 ottonato brass			
		06 bronzo bronzed			
		07 nichelato nickel			

es./e.g.: P.EST70.15.14.00

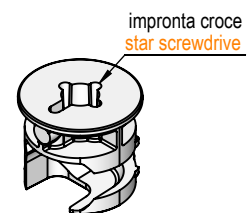
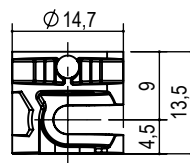
## Boccole tipo EST90 ed ECT90 Housing EST90 and ECT90 type



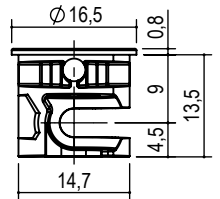
zama  
zamak



senza testa EST90  
without collar EST90



con testa ECT90  
with collar ECT90



tipo type	misura measure	finitura finishing	kg/ 1000pz	pcs/ box	box
P.EST90.15.	18.	00 grezzo raw	6,5	2000	B
		05 ottonato brass			
		06 bronzo bronzed			
		07 nichelato nickel			

es./e.g.: P.EST90.15.18.00

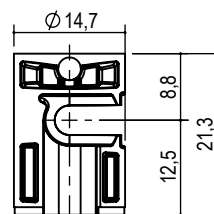
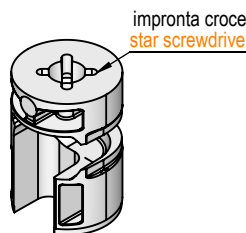
tipo type	misura measure	finitura finishing	kg/ 1000pz	pcs/ box	box
P.ECT90.15.	18.	00 grezzo raw	7,3	2000	B
		05 ottonato brass			
		06 bronzo bronzed			
		07 nichelato nickel			

es./e.g.: P.ECT90.15.18.00

## Boccole tipo EST88 Housing EST88 type



zama  
zamak



tipo type	misura measure	finitura finishing	kg / 1000pz	pcs/ box	box
P.EST88.15.	25.	00 grezzo raw	13	2000	b
		05 ottonato brass			
		06 bronzo bronzed			
		07 nichelato nickel			

es./e.g.: P.EST88.15.25.00



# Boccole tipo EST88 filettate M8 per livellatori

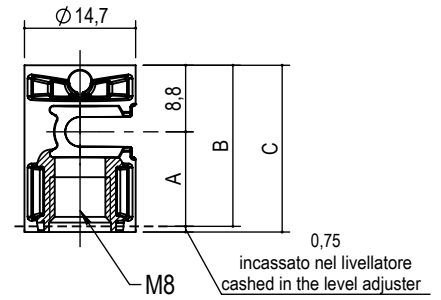
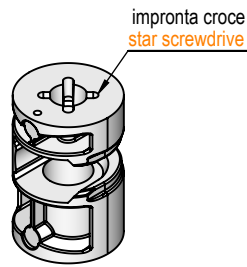
## Housing EST88 M8 threaded type for level adjusters

BOCCOLA ECCENTRICA DA  
ABBINARE AI LIVELLATORI

ECCENTRIC BUSHING FOR  
LEVEL ADJUSTERS



zama  
zamak



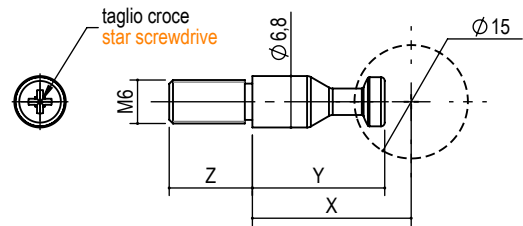
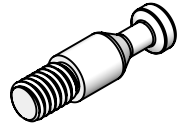
tipo type	misura measure	A	B	C	finitura finishing	kg/ 1000pz	pcs/ box	box
P.EST88.15.	18.M8.	9	17,8	18,5	00 grezzo raw	10,5	2000	B
	25.M8.	12,5	21,3	22	05 ottonato brass 06 bronzo bronzed	12,5		
	32.M8.	16	24,8	25,5	07 nichelato nickel	14,5		

es./e.g.: P.EST88.15.25.M8.00



Ø 6,8

acciaio  
steel



tipo type	misura measure	F	X	Y	Z	finitura finishing	kg / 1000pz	pcs/ box	box
P.EC68.	21.M6x08.	M6	21	17,5	8	02 zincato bianco white zinc	6,0	2000	B
	21.M6x11.			11	6,2		2000		
	28.M6x08.	M6	28	24,5	8		8,4	2000	
	31.M6x08	M6	31	27,5	8		9,5	2000	

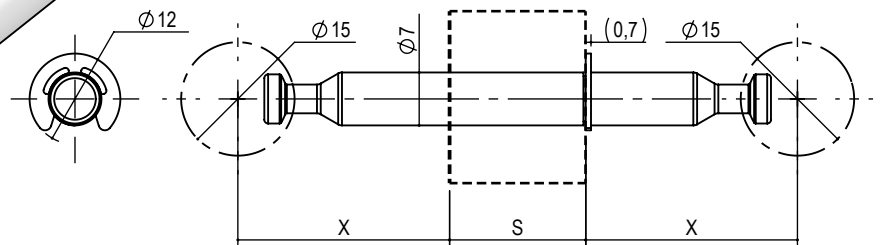
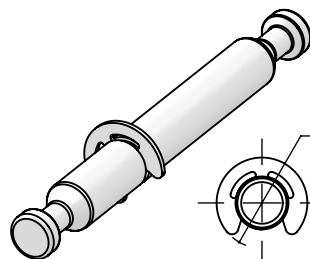
es./e.g.: P.EC68.21.M6x11.02

# Perni passanti per boccole eccentriche

## Through pins for eccentric housing

Ø 7

acciaio  
steel



tipo type	misura measure	X	S	finitura finishing	kg / 1000pz	pcs/ box	box
A.ECP68.	56.	28	0	02 zincato bianco white zinc	14,5	1000	B
	28.18.		18		21,2	1000	
	28.25.		25		24,0	500	

es./e.g.: A.ECP68.56.02

su richiesta altre misure di interesse "X"  
other wheel base "X" on request .



## Giunzioni Connecting fittings

# Serie GN300 GN300 Series

GIUNZIONE REGGIPIANO  
GN300 CON DISPOSITIVO  
ANTISGANCIAMENTO.

DETTAGLIO A: GIUNTO E  
SQUADRETTA  
CARATTERIZZATI DALL'AVERE  
FORI PASSANTI CHE  
PERMETTONO IL PASSAGGIO  
DI UNA CHIAVE ES.4 PER LA  
REGOLAZIONE DEL  
LIVELLATORE DELLA SERIE  
LV330 e LV600.

DETTAGLIO B: IL DISPOSITIVO  
DI ANTISGANCIAMENTO E'  
AZIONABILE SIA DA SOPRA  
SIA DA SOTTO.

DETTAGLIO C: CHIAVE ES.4  
PASSANTE ATTRAVERSO LA  
GIUNZIONE PER LA  
REGOLAZIONE DEL  
LIVELLATORE.

DETTAGLIO D: SISTEMA DI  
TENUTA ASSIALE DEI RIPIANI  
A SOLA PRESSIONE CHE  
FACILITA L'ASSEMBLAGGIO  
AUTOMATIZZATO.

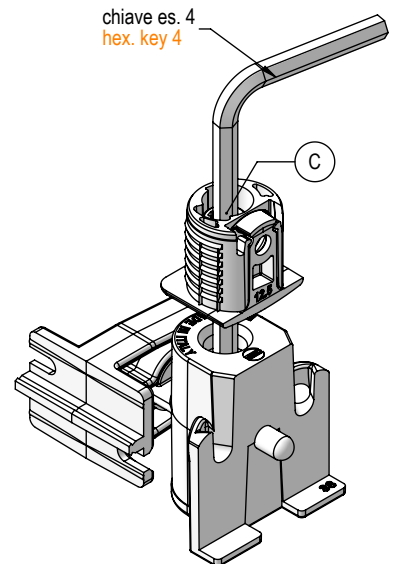
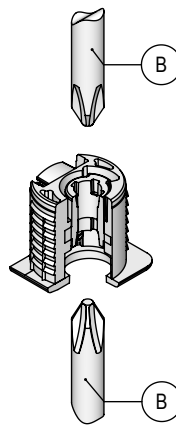
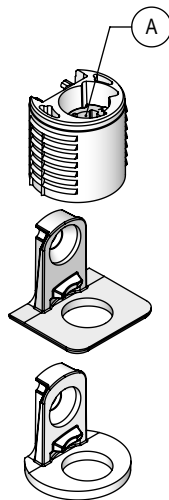
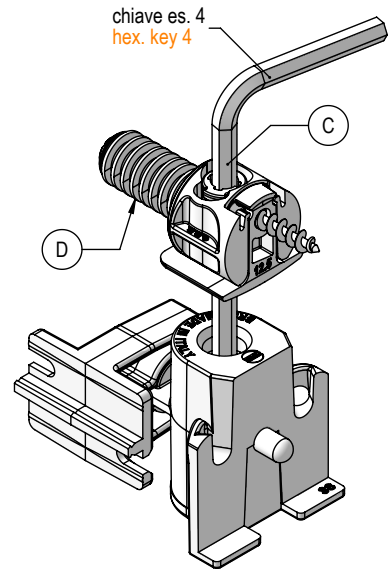
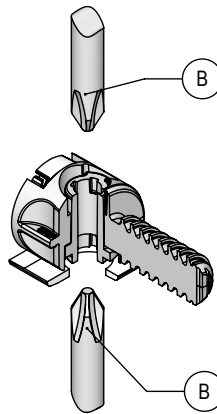
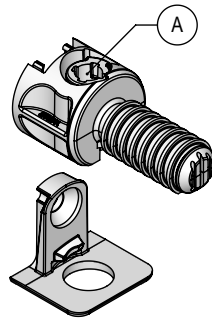
GN300 SHELF SUPPORT  
CONNECTING FITTING WITH  
ANTI-RELEASE DEVICE.

DETAIL A: CONNECTING  
FITTING AND BRACKET  
CHARACTERISED BY HAVING  
THROUGH HOLES THAT  
ALLOW THE PASSAGE OF AN  
HEX. KEY 4 TO ADJUST THE  
LV330 AND LV600 SERIES  
LEVEL ADJUSTER TO WHICH  
IT CAN BE COMBINED.

DETAIL B: SHOWS HOW THE  
ANTI-RELEASE DEVICE CAN  
BE OPERATED EITHER FROM  
ABOVE OR FROM BELOW.

DETAIL C: SHOWS THE HEX.  
KEY 4 PASSING THROUGH  
THE CONNECTING FITTING  
FOR THE ADJUSTMENT OF  
THE LEVEL ADJUSTER.

DETAIL D: SHOWS THE  
PRESSURE ONLY HOLDING  
SYSTEM OF THE SHELVES  
THAT FACILITATES  
AUTOMATED ASSEMBLY.



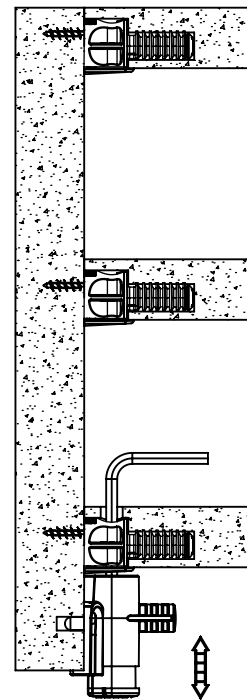
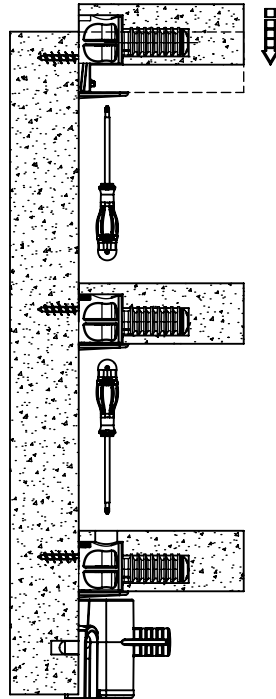


## Esempi di applicazioni giunzioni serie GN300-GN330 Application examples connecting fittings GN300-GN330 series

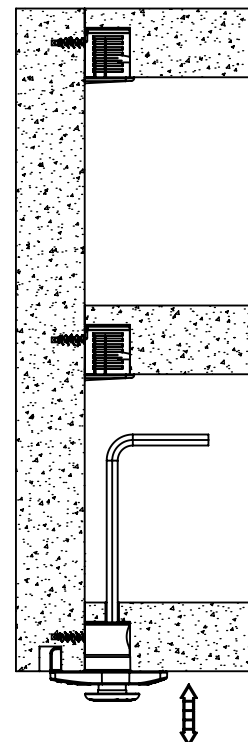
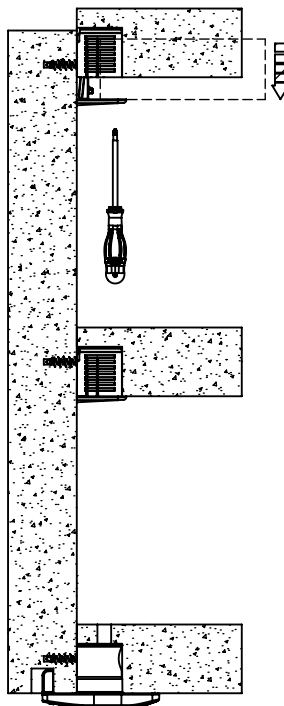
### Serie GN300 GN300 series

L'ASSEMBLAGGIO DEL PIANO AVVIENE CON UN MOVIMENTO VERTICALE. IL FISSAGGIO DELLA GIUNZIONE PUO' AVVENIRE SIA DAL LATO SUPERIORE CHE INFERIORE. E' POSSIBILE PASSARE ATTRAVERSO LA GIUNZIONE PER EFFETTUARE LA REGOLAZIONE DEL LIVELLATORE DELLA SERIE LV330 O LV600 CON CHIAVE ES. 4. LA STESSA GIUNZIONE E' UTILIZZABILE SU TUTTI I RIPIANI SUPERIORI INFERIORI E INTERMEDI.

THE ASSEMBLY OF THE SHELF IS PERFORMED WITH VERTICAL MOVEMENT. CONNECTING FITTING FIXING CAN BE CARRIED OUT BOTH FROM THE TOP AND BOTTOM SIDE. PASSING THROUGH THE CONNECTING FITTING WITH AN HEX. KEY 4 CAN PERFORM ADJUSTMENT OF THE LV 330 OR LV600 SERIES LEVEL ADJUSTER. THE SAME CONNECTING FITTING CAN BE USED ON ALL UPPER LOWER AND INTERMEDIATE SHELVES.



### Serie GN330 GN330 series





# Giunti reggipiano tipo GN301

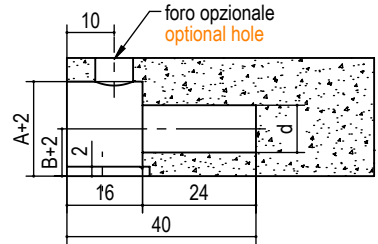
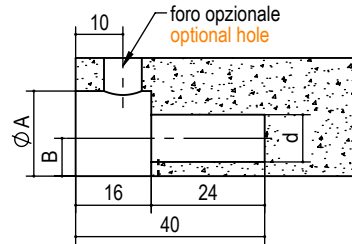
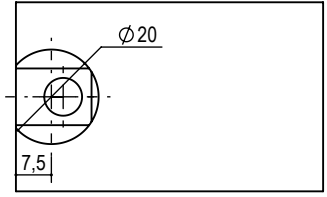
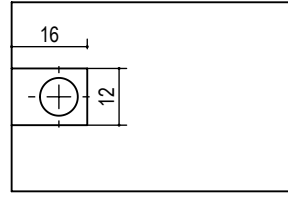
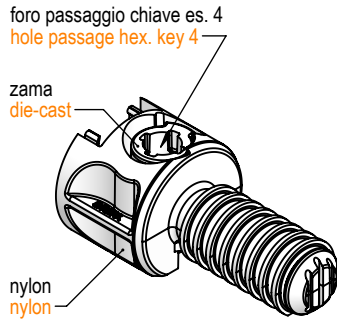
## Shelf support GN301 type



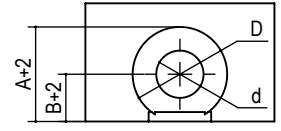
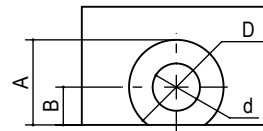
Test Report 117684/1-117684/2

BUSSOLA RIPIANO CON SISTEMA ANTISGANCIO INTEGRATO AZIONABILE SIA SUPERIORMENTE SIA INFERIORMENTE. IL FORO PASSANTE PERMETTE IL PASSAGGIO DI UNA CHIAVE ES.4. ASSEMBLAGGIO A PRESSIONE ORIZZONTALE.

SHELF BUSH WITH INTEGRATED ANTI-RELEASE SYSTEM THAT CAN BE OPERATED ABOVE AND BELOW. THE THROUGH HOLE ALLOWS THE PASSAGE OF AN HEX. KEY 4. SNAP-ON ASSEMBLY HORIZONTAL ONLY.



tipo type	misura measure	ØD	A	B	Ød	finitura finishing	kg/ 1000 pz	pcs/ box	box
A.GN301.	16.	16	14	6	8	53 nero black	5,3	2500	B
	20.	20	18	8			8,1	1000	
	22.	22	20	9	10		8,9	1000	
	25.	25	22,5	10			11,0	1000	



lavorazioni per squadrette tipo GN301  
machining for bracket support type GN301

lavorazioni per squadrette tipo GN311  
machining for bracket support type GN311

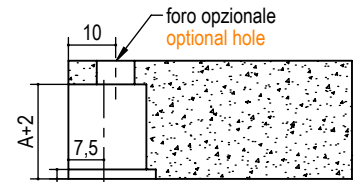
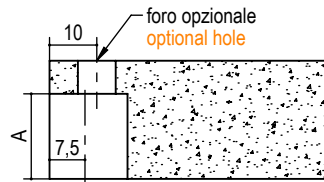
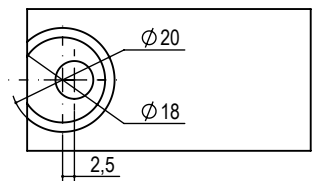
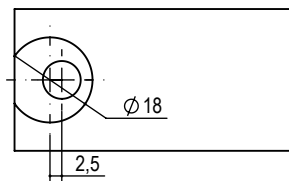
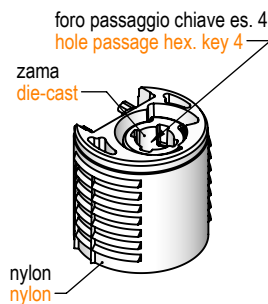
es./e.g.: A.GN301.20.53

# Giunti reggipiano tipo GN331

## Shelf support GN331 type

BUSSOLA REGGIRIPIANO CON SISTEMA ANTISGANCIAMENTO INTEGRATO AZIONABILE SIA SUPERIORMENTE SIA INFERIORMENTE. IL FORO PASSANTE PERMETTE IL PASSAGGIO DI UNA CHIAVE ES.4. L'ASSEMBLAGGIO E' SOLAMENTE A PRESSIONE.

SHELF BUSH WITH INTEGRATED ANTI-RELEASE SYSTEM THAT CAN BE OPERATED ABOVE AND BELOW. THE THROUGH HOLE ALLOWS THE PASSAGE OF AN HEX. KEY 4. SNAP-ON ASSEMBLY ONLY.



lavorazioni per squadrette tipo GN301  
machining for bracket support type GN301

lavorazioni per squadrette tipo GN311  
machining for bracket support type GN311



ACCESSORI  
ACCESSORIES



DIMA ASSEMBLAGGIO MANUALE  
MANUAL ASSEMBLY TEMPLATE  
P.UT.GN330.00

tipo type	misura measure	A	finitura finishing	kg / 1000 pz	pcs/ box	box
A.GN331.	18x14.	14	53 nero black	4,8	2500	B
	18x18.	18		6,6	2000	
	18x23.	23		8,1	2000	

es./e.g.: A.GN331.18x18.53



# Squadrette reggipiano foro svasato tipo GN301 - GN311

## Bracket support countersunk hole GN301 - GN311 type

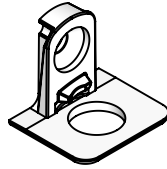
CON FORO PASSANTE PER  
VITE TRUCIOLARE Ø4.

BRACKET FOR CHIPBOARD  
SCREW 4 HOLE.

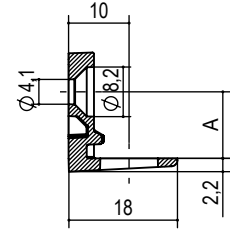
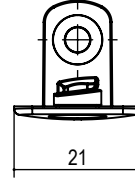


400 N

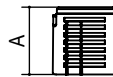
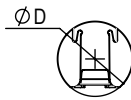
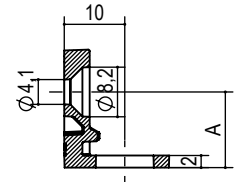
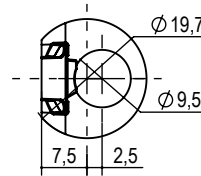
zama  
die-cast



tipo - type P.GN301FP.



tipo - type P.GN311FP.



		tipo type	misura measure	A	finitura finishing	kg / 1000pz	pcs/ box	box
Ø16	A=14	P.GN301FP.	09.	9	07 nichelato <i>nickel</i> a richiesta - <i>on request</i> NT titanio - <i>titanium</i> 06 bronzato - <i>bronze</i>	5,5	2500	B
Ø20 - Ø22	A=18	P.GN301FP.	11.	11		6,2		
			12,5.	12,5		6,4		
Ø22	A=18	P.GN301FP.	14.	14.		6,4		
Ø25	A=23	P.GN301FP. P.GN311FP.	15.	15.	6,8			

es./e.g.: P.GN301FP.11.07



## Squadrette reggipiano con tassello preassemblato tipo GN301 - GN311 Bracket support preassembled with rawlplug GN301 - GN311 type

CON BUSSOLA Ø 5 AD  
ESPANSIONE PREMONTATA.

BRACKET WITH PREMONTED  
Ø 5 EXPANDING SOCKET.



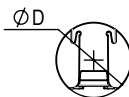
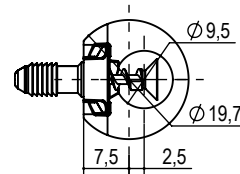
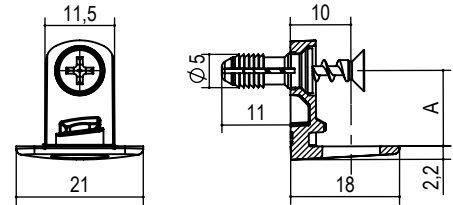
zama nylon  
die-cast nylon



A.GN301VB.



A.GN311VB.



			tipo <b>type</b>	misura <b>measure</b>	A	finitura <b>finishing</b>	kg / 1000pz	pcs/ box	box
Ø20 - Ø22		A=18	A.GN301VB.	11.	11	07 nichelato <b>nickel</b> a richiesta - <b>on request</b> NT titanio - <b>titanium</b>	7,2	2000	B
				12,5.	12,5				
Ø25		A=23	A.GN301VB. A.GN311VB.	15.	15.	06 bronzato - <b>bronze</b>	7,7		

es./e.g.: A.GN301VB.11.07

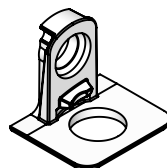
## Squadrette reggipiano per vite euro tipo GN301 - GN311 Bracket support for euro screw GN301 - GN311 type

CON FORO PASSANTE PER VITE  
EURO O VITE SPECIALE M6 A  
RICHIESTA.

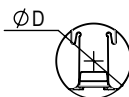
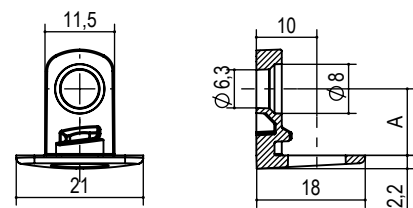
WITH HOLE FOR SCREW EURO  
OR SPECIAL SCREW M6 A  
REQUEST.



zama  
die-cast

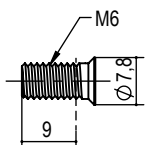


P.GN301EU.

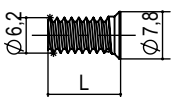


			tipo <b>type</b>	misura <b>measure</b>	A	finitura <b>finishing</b>	kg / 1000pz	pcs/ box	pcs/ box
Ø16		A=14	P.GN301EU.	09.	9	07 nichelato <b>nickel</b> a richiesta - <b>on request</b> NT titanio - <b>titanium</b> 06 bronzato - <b>bronze</b>	5,3	2000	B
Ø20 - Ø22		A=18	P.GN301EU.	11.	11		6,0		
				12,5.	12,5				
Ø25		A=23	P.GN301EU.	15.	15.	6,6			

es./e.g.: P.GN301EU.11.07



VITE SPECIALE M6  
SPECIAL SCREW M6  
S.P.A585.M6.12.07



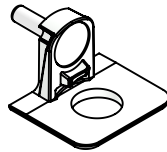
VITE MORDENTE PER  
FORO Ø5 A RICHIESTA  
SCREW FOR HOLE Ø5  
ON DEMAND

## Squadrette reggipiano con perno Ø3 tipo GN301 - GN311

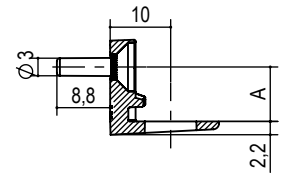
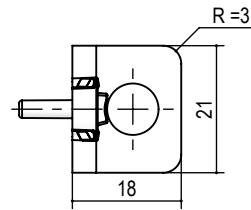
### Bracket support with pin Ø3 GN301 - GN311 type



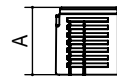
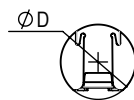
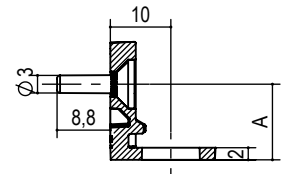
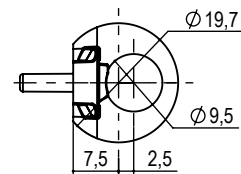
zama  
die-cast



A.GN301PR.



A.GN311PR.



			tipo type	misura measure	A	finitura finishing	kg / 1000pz	pcs/ box	box
	Ø16	A=14	A.GN301PR.	09.	9	07 nichelato nickel a richiesta - on request NT titanio - titanium	12,9	2000	B
	Ø20 - Ø22	A=18	A.GN301PR.	11. 12,5.	11 12,5		13,6		
	Ø22	A=18	A.GN301PR.	14.	14.	06 bronzato - bronze	14		
	Ø25	A=23	A.GN301PR. A.GN311PR.	15.	15.	14,2			

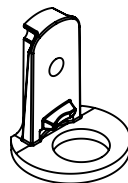
es./e.g.: A.GN301PR.09.00

## Squadrette reggipiano con foro M4 tipo GN301 - GN311

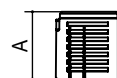
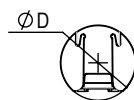
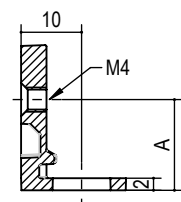
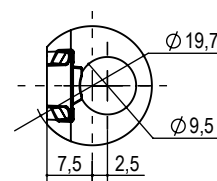
### Bracket support with hole M4 GN301 - GN311 type



zama  
die-cast



P.GN311M4.



			tipo type	misura measure	A	finitura finishing	kg / 1000pz	pcs/ box	box
	Ø25	A=23	P.GN311M4.	15.	15.	07 nichelato nickel a richiesta - on request NT titanio - titanium 06 bronzato - bronze	7,5	2000	B

es./e.g.: P.GN311M4.15.07



## Squadrette tagliate reggipiano foro svasato tipo GN301 Bracket support cut countersunk hole GN301 type

CON FORO PASSANTE  
PER VITE TRUCIOLARE Ø4.

BRACKET FOR  
CHIPBOARD SCREW 4  
HOLE.

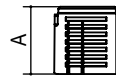
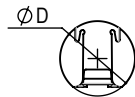
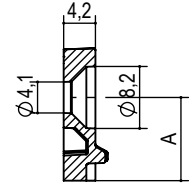
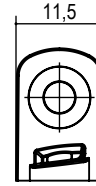


400 N

zama  
die-cast



P.GN301SA.FP.



		tipo type	misura measure	A	finitura finishing	kg / 1000pz	pcs/ box	box
Ø16	A=14	P.GN301SA.FP.	09.	9		2,6	2000	B
Ø20 - Ø22	A=18	P.GN301SA.FP.	11.	11	07 nichelato <i>nickel</i> a richiesta - <i>on request</i>	3,28		
			12,5.	12,5	NT titanio - <i>titanium</i> 06 bronzato - <i>bronze</i>	3,3		
Ø22	A=18	P.GN301SA.FP.	14.	14.		3,3		
Ø25	A=23	P.GN301SA.FP.	15.	15.		3,82		

es./e.g.: P.GN301SA.FP.11.07

## Squadrette tagliate reggipiano per vite euro tipo GN301 Bracket support cut for euro screw GN301 type

CON FORO PASSANTE  
PER VITE EURO E VITE  
SPECIALE M6 A  
RICHIESTA .

WITH HOLE FOR SCREW  
EURO AND SPECIAL  
SCREW M6 A REQUEST.

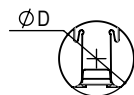
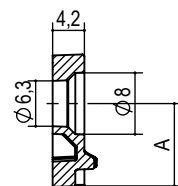
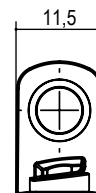


400 N

zama  
die-cast

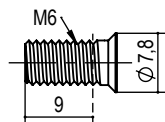


P.GN301SA.EU.

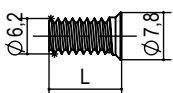


		tipo type	misura measure	A	finitura finishing	kg / 1000pz	pcs/ box	box
20 - 22	A=18	P.GN301FP.EU.	11.	11	07 nichelato <i>nickel</i> a richiesta - <i>on request</i> NT titanio - <i>titanium</i> 06 bronzato - <i>bronze</i>	3,1	2000	B

es./e.g.: P.GN301SA.EU.11.07



VITE SPECIALE M6  
SPECIAL SCREW M6  
S.P.A585.M6.12.07



VITE MORDENTE PER  
FORO Ø5 A RICHIESTA  
SCREW FOR HOLE Ø5  
ON DEMAND





## Squadretta reggiripiano tipo P.A360 Bracket support P.A360 type

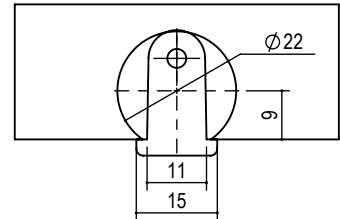
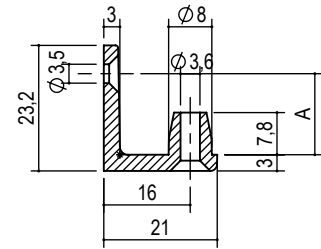
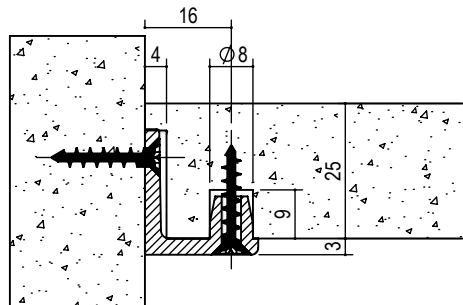
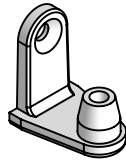
ATTRAVERSO IL FORO DELLA SQUADRETTA SI PUO' FISSARE IL RIPIANO CON UNA VITE Ø3.5

THROUGH THE HOLE SQUARE CAN 'FIX THE PLAN WITH A SCREW Ø3.5



400 N

zama  
die-cast



tipo type	misura measure	A	finitura finishing	kg/ 1000pz	pcs/ box	box
P.A360.	15.	15,0	05 ottonato brass 07 nichelato nickel	9	2000	B

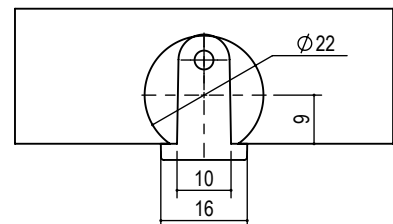
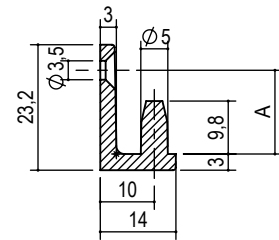
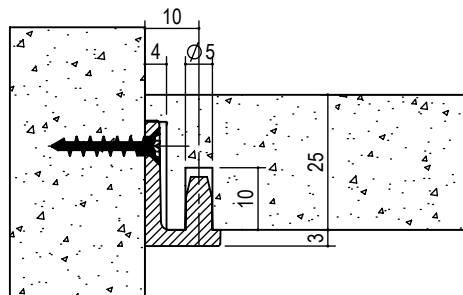
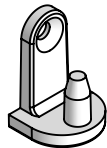
es./e.g.: P.A360.15.05

## Squadretta reggiripiano tipo P.A361 Bracket support P.A361 type



400 N

zama  
die-cast



tipo type	misura measure	A	finitura finishing	kg/ 1000pz	pcs/ box	box
P.A361.	15,5.	15,0	05 ottonato brass 07 nichelato nickel	9	2000	B

es./e.g.: P.A361.15,5.05



## Giunzione tipo GN361 Shelf support GN361

IL REGGIPIANO SERIE GN360  
PUO' ESSERE COMBINATO  
CON LE VITI DELLA GAMMA  
GN400.

THE GN360 SERIES CAN BE  
COMBINED WITH THE GN400  
SERIES SCREWS.

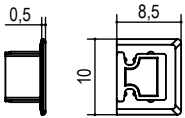


400 N



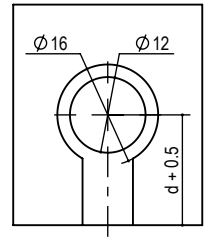
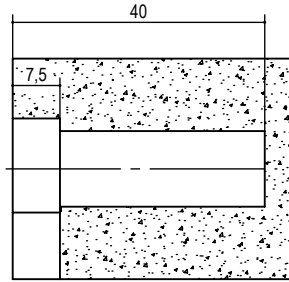
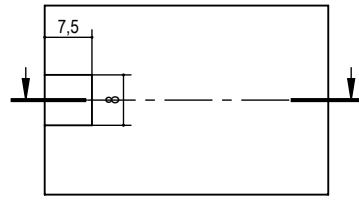
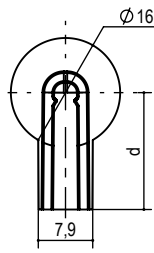
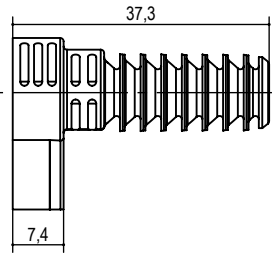
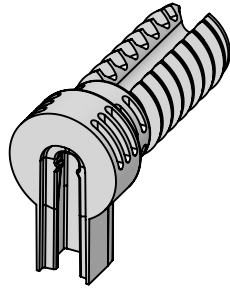
300 N

ACCESSORI  
ACCESSORIES



tappo in plastica GN361  
plastic cover cap GN361  
cod. P.T361.08.00

POM Acetalica  
Acetal POM



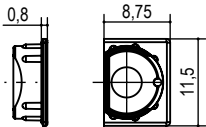
compatibile con tutte  
le viti serie GN400  
compatible with  
GN400 series screws

tipo type	d	finitura finishing	kg / 1000pz	pcs/ box	box
P.GN361.16.	17.	53 nero black	4,5	2500	B

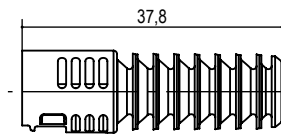
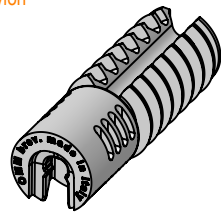
es./e.g.: P.GN361.16.17.53

## Giunzione tipo GN363 Shelf support GN363

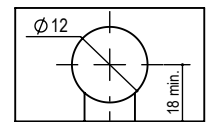
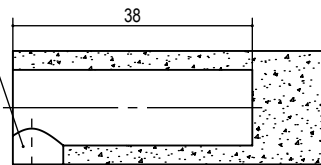
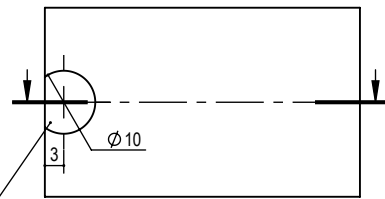
Nilon PA  
PA Nylon



tappo consigliato  
recommended cap GN363  
cod. P.T363.11.5.09.00  
vedi pagina accessori  
see accessories page



foro testa perno e tappo  
hole for pin and cover cap



compatibile con tutte  
le viti serie GN400  
compatible with  
GN400 series screws

tipo type	misura measure	ØD	P	L	finitura finishing	kg / 1000pz	pcs/ box	box
P.GN363.	12.38.	12	38	37,8	53 nero black	3	2500	B

es./e.g.: P.GN363.12.38.53

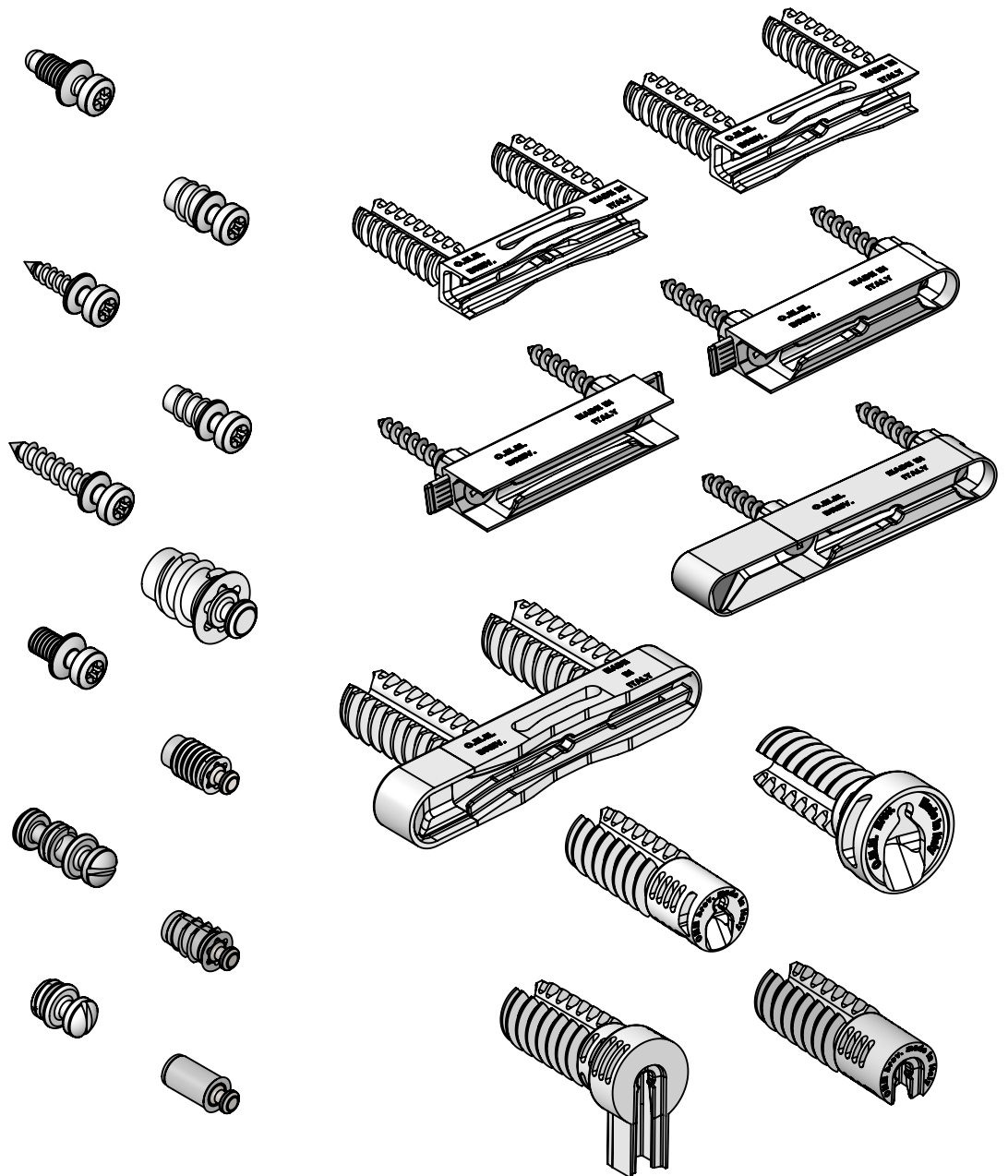


## Giunzioni Connecting fittings

GIUNZIONE DELLA SERIE GN400  
E' CARATTERIZZATA  
DALL'ESSERE COMPLETAMENTE  
A SCOMPARSA UNA VOLTA  
ASSEMBLATA.

THE GN400 SERIES  
CONNECTING FITTING IS  
CHARACTERISED BY BEING  
COMPLETELY RETRACTABLE  
ONCE INSTALLED.

# Serie GN400 GN400 Series





## Giunzioni Connecting fittings

# Serie GN400 GN400 Series

LA GIUNZIONE DELLA SERIE GN400 E' CARATTERIZZATA DALL'ESSERE PARZIALMENTE A SCOMPARSATA UNA VOLTA ASSEMBLATA.

FIGURA A: LA PARTICOLARE FORMA INDICATA NELLA FIGURA A GENERA DURANTE L'ASSEMBLAGGIO UNA FORZA DI TRAZIONE TRA RIPIANO E IL MONTANTE.

FIGURA B-C : MOSTRANO LE DUE MODALITA' DI ASSEMBLAGGIO DELLA GN400:

- LA PRIMA CON UN MOVIMENTO ORIZZONTALE
- LA SECONDA CON DUE MOVIMENTI, VERTICALE E ORIZZONTALE

THE GN400 SERIES CONNECTING FITTING IS CHARACTERISED BY BEING PARTIALLY RETRACTABLE ONCE INSTALLED.

FIGURE A: THE SPECIAL SHAPE INDICATED IN FIGURE A GENERATES A TRACTION FORCE BETWEEN THE SHELF AND THE UPRIGHT WHEN ASSEMBLING.

FIGURES B-C: SHOW THE TWO ASSEMBLY METHODS OF THE GN400:

- THE FIRST WITH A HORIZONTAL MOVEMENT
- THE SECOND WITH TWO MOVEMENTS, VERTICAL AND HORIZONTAL

figura: A  
drawing: A

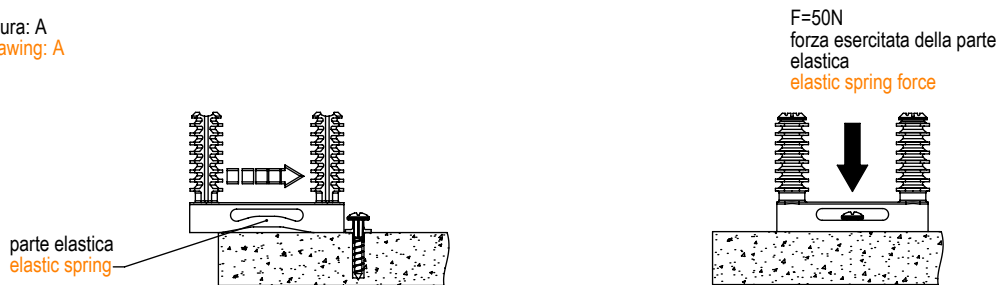


figura: B  
drawing: B

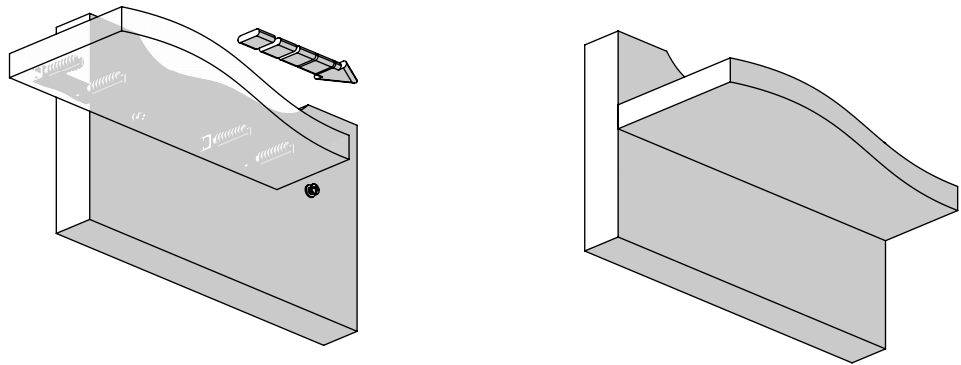
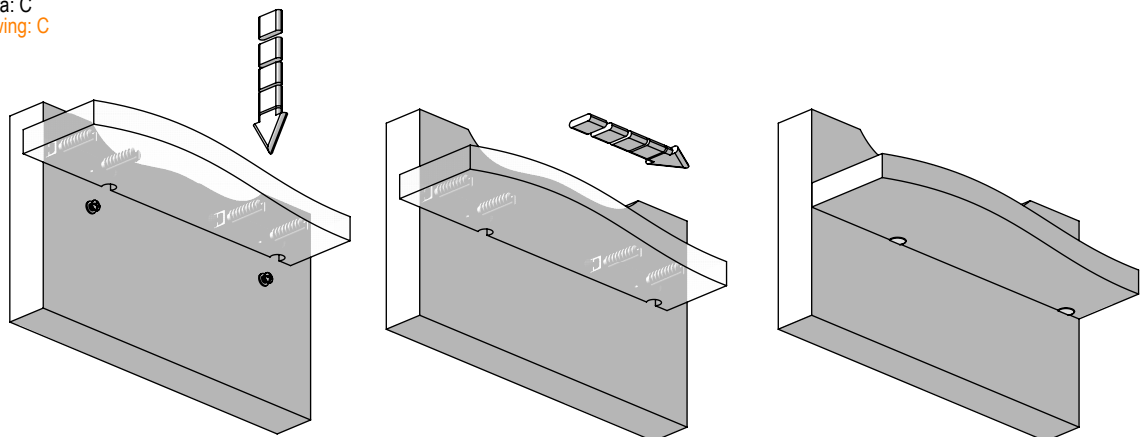
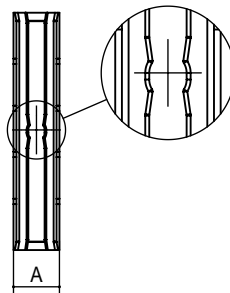
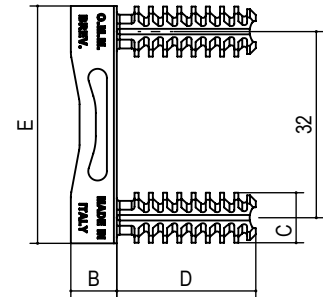
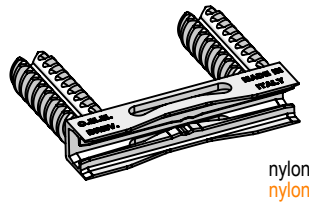
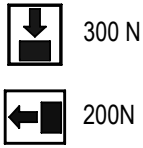
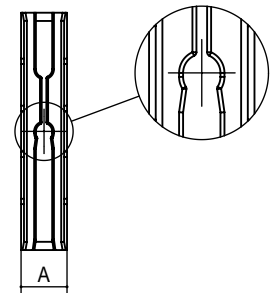


figura: C  
drawing: C



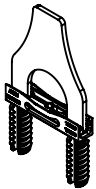


giunzione GN401 - GN411 con asola passante  
shelf support GN401 - GN411 through slot

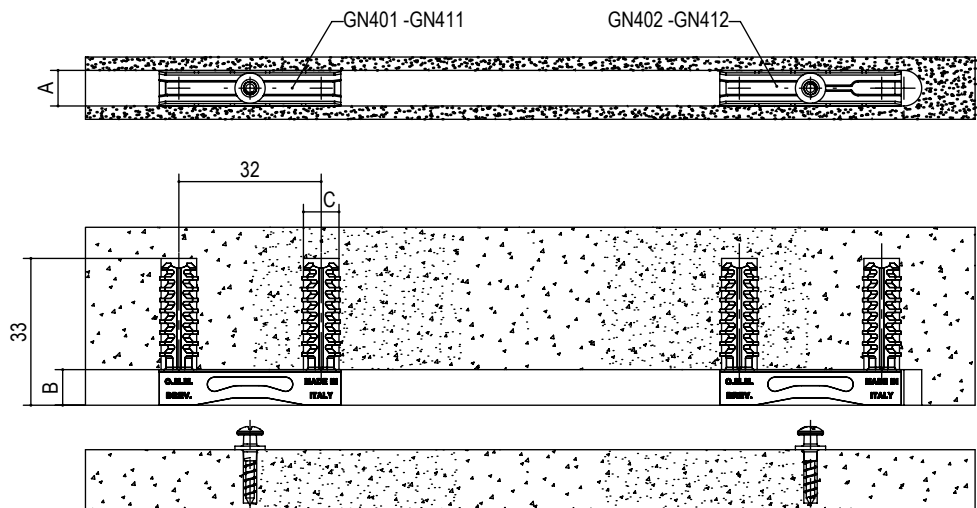


giunzione GN402 - GN412 con fermo  
shelf support GN402 - GN412 with stop

ACCESSORI  
ACCESSORIES



DIMA MONTAGGIO  
MANUALE  
MANUAL MONTAGE  
TEMPLATE  
P.UT.GN400.02



tipo type	misura measure	A	B	C	D	E	finitura finishing	kg / 1000pz	pcs/ box	box
P.GN401.	8x8.	8		8	24	41	53 nero black	3,6	2500	B
P.GN402.			8							
P.GN411.	12x8.	12		12	28	45				
P.GN412.										

es./e.g.: P.GN401.8x8.53



# Reggi piano invisibile tipo GN406-407

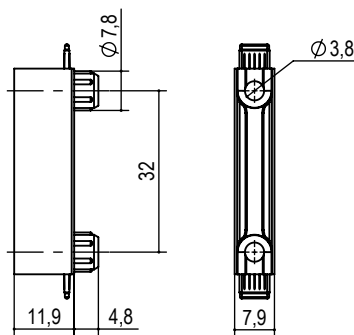
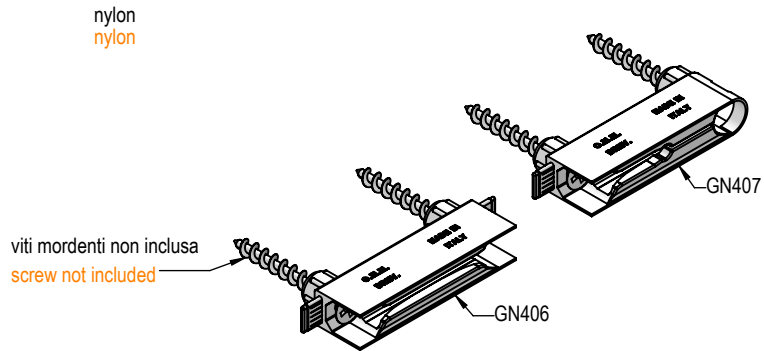
## Invisible shelf support GN406-407 type



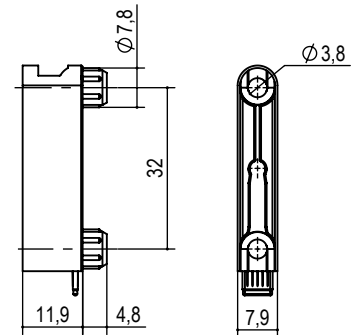
GIUNZIONE CARATTERIZZATA DALL'ESSERE COMPLETAMENTE A SCOMPARSA UNA VOLTA ASSEMBLATA.

DOTATA DI FORI PASSANTI PER POTER ESSERE AVVITATA, QUESTO PERMETTE DI ESSERE USATA ANCHE SU DIVISORI VERTICALI

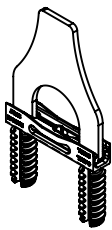
THE GN400 SERIES CONNECTING FITTING IS CHARACTERISED BY BEING COMPLETELY RETRACTABLE ONCE INSTALLED. EQUIPPED WITH HOLES FOR BEFORE BEING SCREWED, THIS PERMITS TO BE USED ALSO ON VERTICAL DIVIDERS.



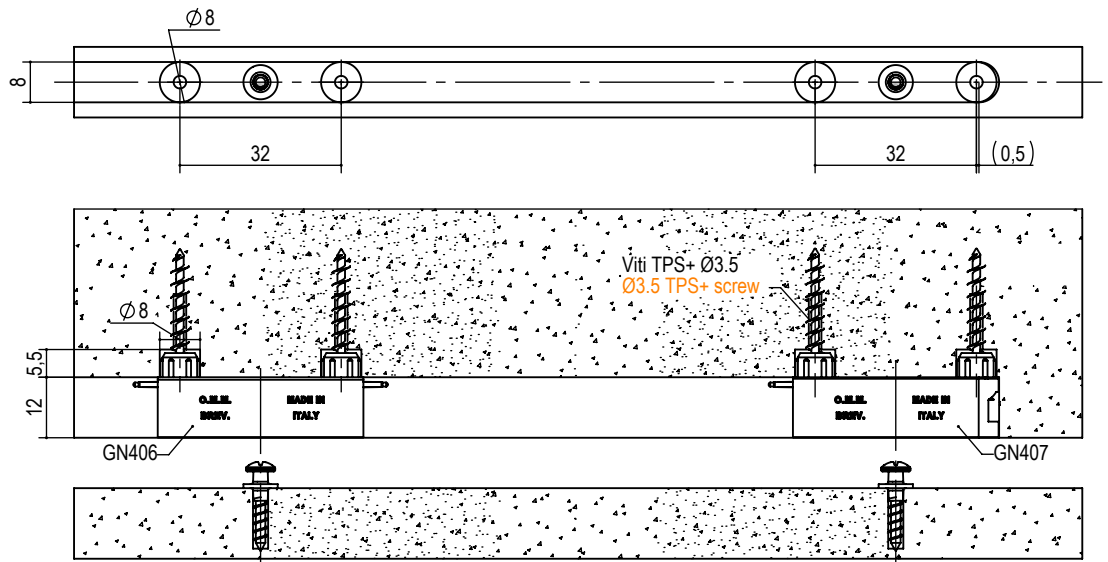
giunzione GN406 passante  
shelf support GN406 through slot



giunzione GN407 con fermo  
shelf support GN407 with stop



DIMA MONTAGGIO  
MANUALE  
MANUAL MONTAGE  
TEMPLATE  
P.UT.GN400.02



tipo type	misura measure	finitura finishing	kg / 1000pz	pcs/ box	box
P.GN406.	8x12.	53 nero black	3,6	2000	B
P.GN407.			4,6		

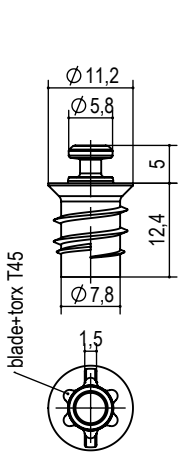
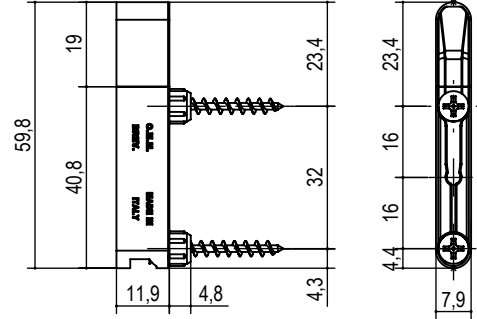
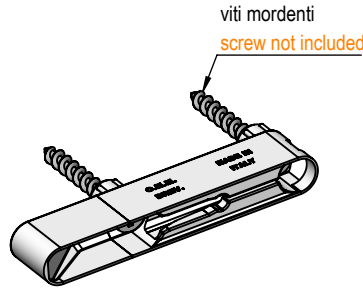
es./e.g.: P.GN406.08x12.53



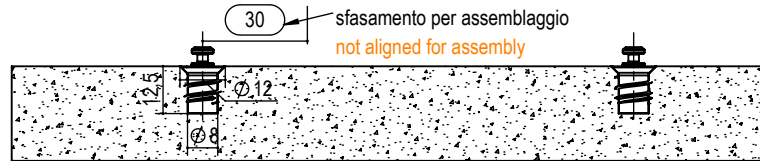
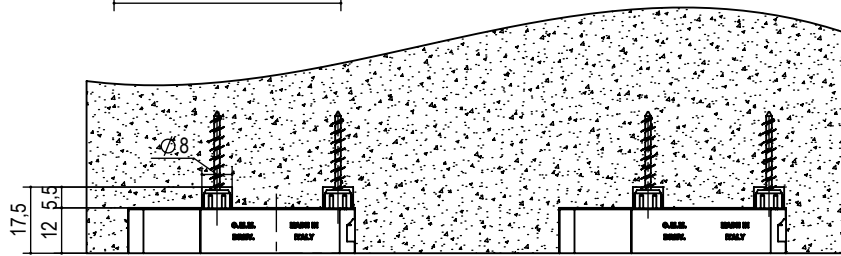
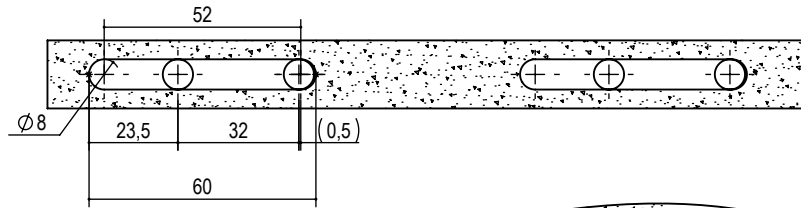
# Reggi piano invisibile tipo GN437 a scomparsa

## Invisible shelf support GN437 type invisible

nylon grigio  
gray nylon



Perno con molla TS  
Pin under spring TS  
A.GN400.TS.8.12.5.00



tipo type	misura measure	finitura finishing	kg / 1000pz	pcs/ box	box
A.GN437.	8x12.	53 nero black	8,3	1000	B

es./e.g.: A.GN437.8x12.53



## Giunzioni Connecting fittings

# Serie GN440 GN440 Series

GIUNZIONE DELLA SERIE GN440 È CARATTERIZZATA DALL'ESSERE COMPLETAMENTE A SCOMPARSA UNA VOLTA ASSEMBLATA.

FIGURA A: LA PARTICOLARE FORMA INDICATA NELLA FIGURA A GENERA DURANTE L'ASSEMBLAGGIO UNA FORZA DI TRAZIONE TRA RIPIANO E IL MONTANTE.

FIGURA B: MOSTRA LA MODALITA' DI ASSEMBLAGGIO DELLA SERIE GN440.

THE GN440 SERIES CONNECTING FITTING IS CHARACTERISED BY BEING COMPLETELY RETRACTABLE ONCE INSTALLED.

FIGURE A: THE SPECIAL SHAPE INDICATED IN FIGURE A GENERATES A TRACTION FORCE BETWEEN THE SHELF AND THE UPRIGHT WHEN ASSEMBLING.

FIGURES B: SHOW THE TWO ASSEMBLY METHODS OF THE GN440.

figura : A  
drawing: A

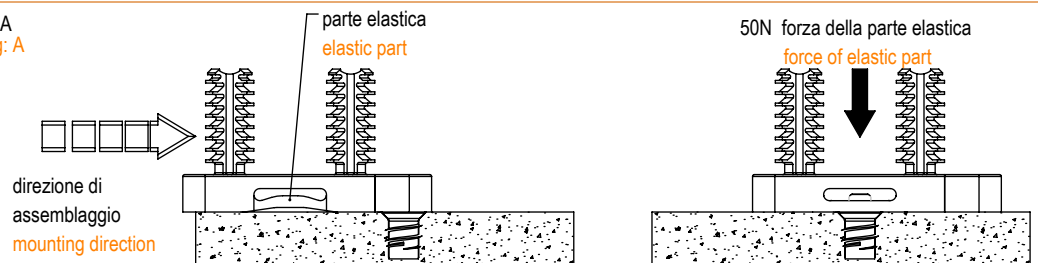
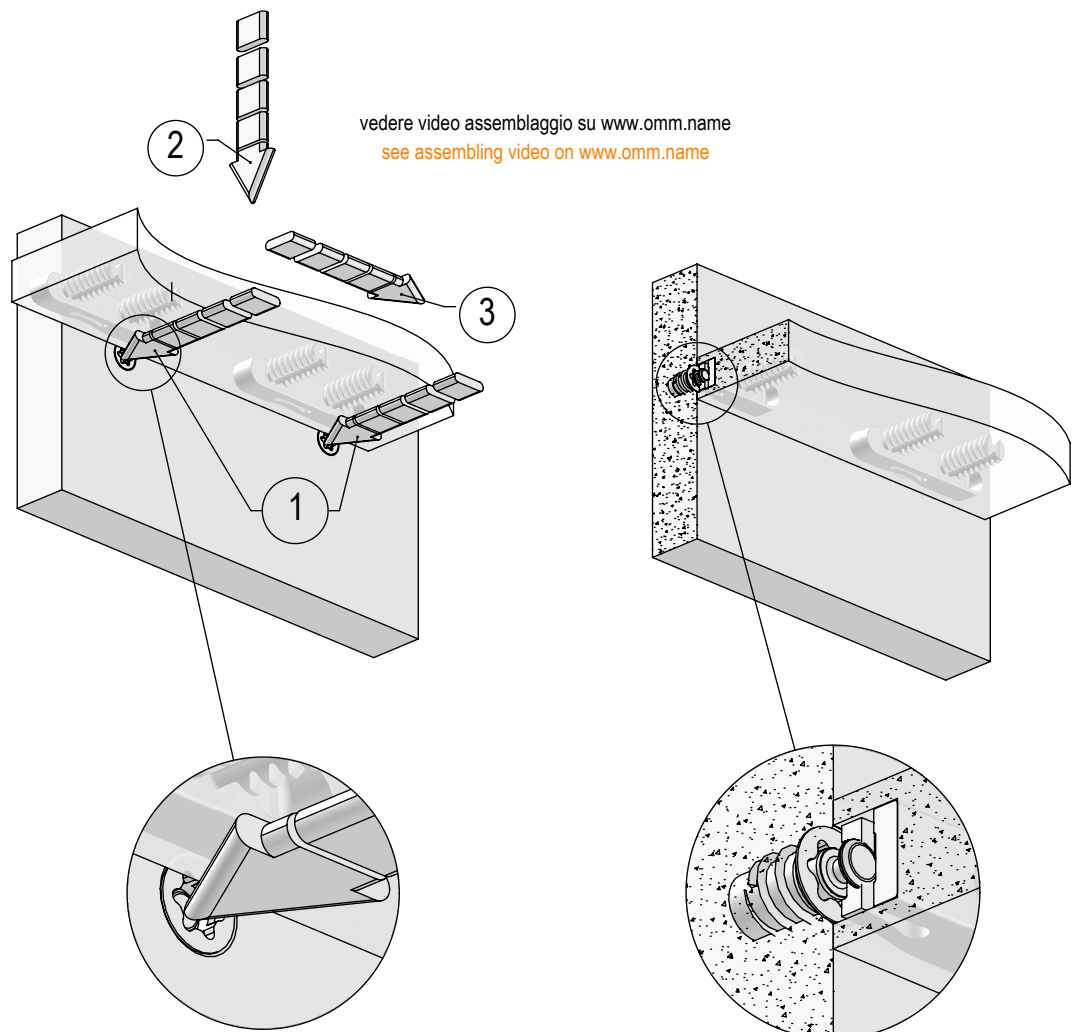


figura : B  
drawing: B



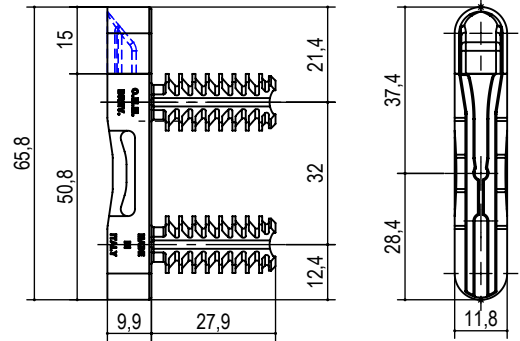
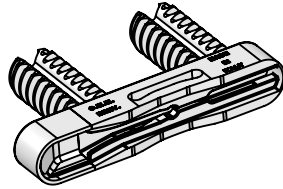
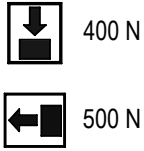




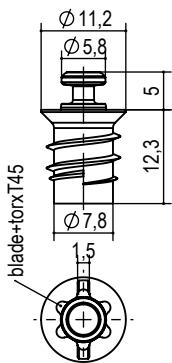
# Reggi piano invisibile tipo GN442

## Invisible shelf support GN442 type

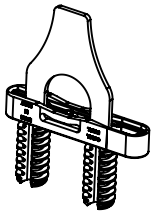
nylon grigio  
gray nylon



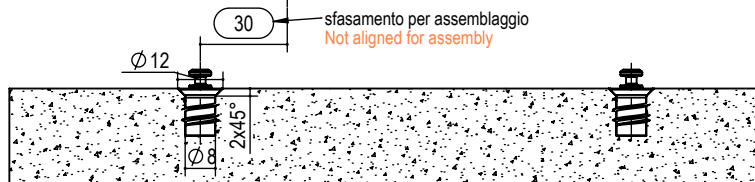
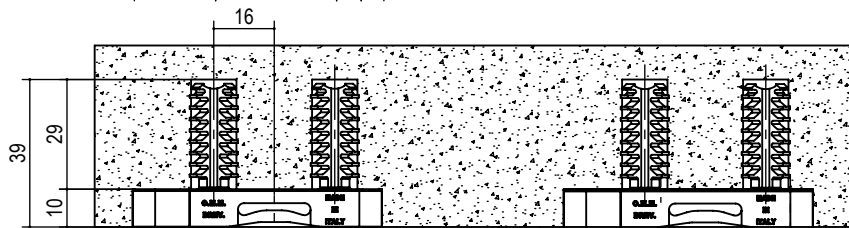
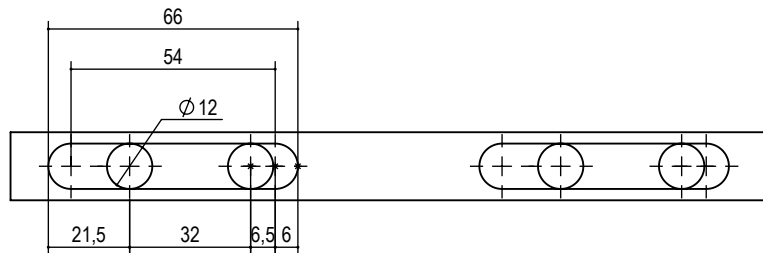
### ACCESSORI ACCESSORY



Perno con molla TS  
Pin under spring TS  
A.GN400.TS.8.12.5.00



DIMA MONTAGGIO  
MANUALE  
MANUAL MONTAGE  
TEMPLATE  
P.UT.GN400.02



tipo type	misura measure	finitura finishing	kg / 1000pz	pcs/ box	box
A.GN442.	12x10.	53 nero black	8,3	1000	B

es./e.g.: A.GN442.12x10.53



## Giunzioni Connecting fittings

# Serie GN450 GN450 Series

GIUNZIONE DELLA SERIE GN450 E' CARATTERIZZATA DALL'ESSERE COMPLETAMENTE A SCOMPARSA UNA VOLTA MONTATA.

FIGURA A: LA PARTICOLARE FORMA INDICATA NELLA FIGURA A GENERA DURANTE L'ASSEMBLAGGIO UNA FORZA DI TRAZIONE TRA RIPIANO E IL MONTANTE.  
FIGURA B-C: MOSTRA LA MODALITA' DI ASSEMBLAGGIO DELLA SERIE GN450 SIA CON SCORRIMENTO ORIZZONTALE DEL PIANO (FIG. B) SIA CON SCORRIMENTO VERTICALE DEL PIANO FIG. C.  
SI FA NOTARE CHE PER ESEGUIRE I MONTAGGI E' NECESSARIO COMPRIMERE IL PERNO A SCOMPARSA PER PERMETTERE IL PASSAGGIO DEL RIPIANO.

THE GN450 SERIES CONNECTING FITTING IS CHARACTERISED BY BEING COMPLETELY RETRACTABLE ONCE INSTALLED.

FIGURE A: THE SPECIAL SHAPE INDICATED IN FIGURE A GENERATES A TRACTION FORCE BETWEEN THE SHELF AND THE UPRIGHT WHEN ASSEMBLING.

FIGURES B: SHOW THE TWO ASSEMBLY METHODS OF THE GN450.  
FIGURE C: SHOWING THE RETRACTABLE PIN TO BE COMPRESSED TO ALLOW THE STEP UP TO THE SHELF FINAL PLACEMENT.

figura : A Assemblaggio  
drawing: A Assembly

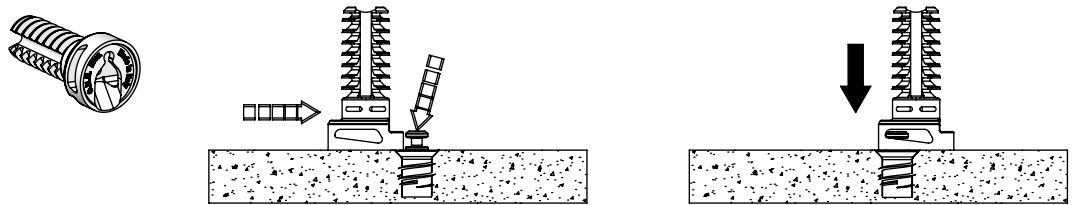


figura : B Assemblaggio Orizzontale  
drawing: B Horizontal Assembly

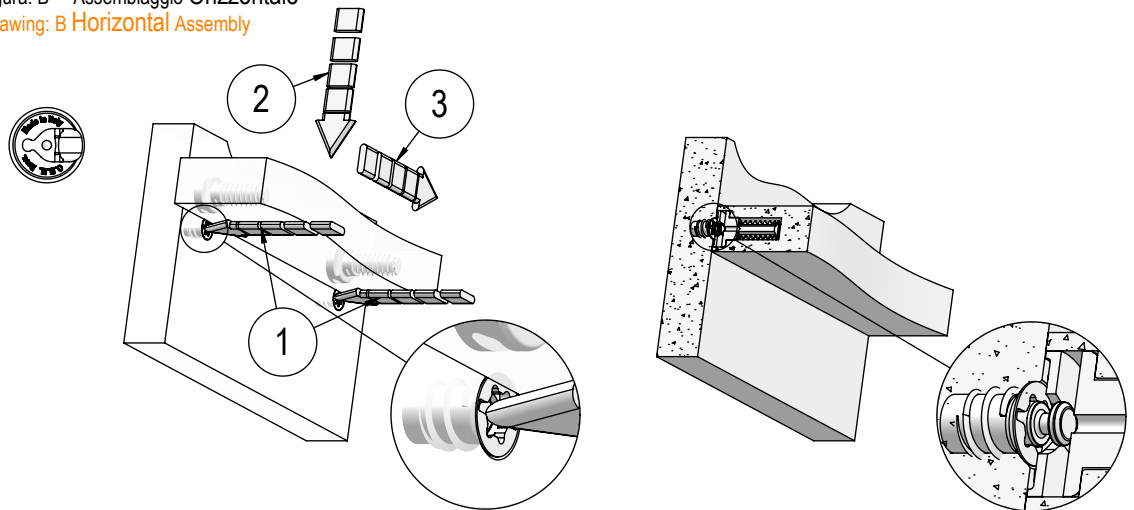
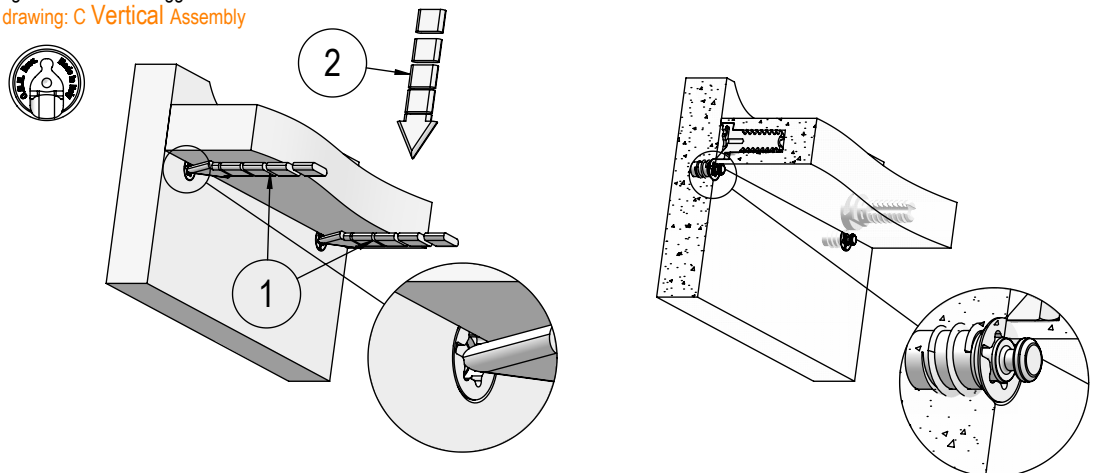


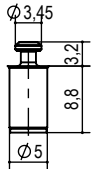
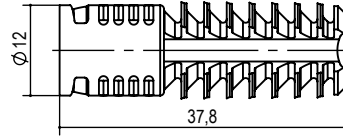
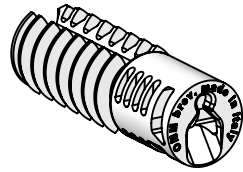
figura : C Assemblaggio Verticale  
drawing: C Vertical Assembly





# Giunzione tipo GN452.12 a scomparsa Invisible shelf support GN452.12 type

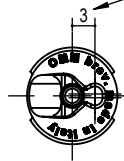
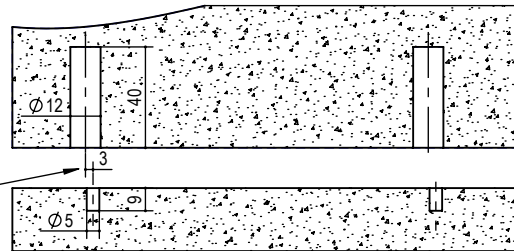
nylon grigio  
gray nylon



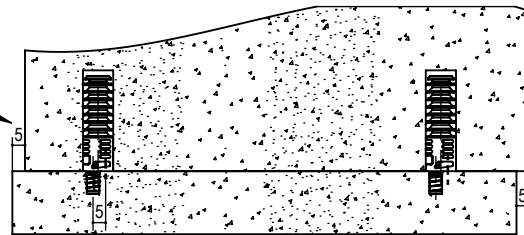
Perno a scomparsa ST  
Hidden pin ST  
A.GN400.TS.05.09.02  
Box A 5000 pcs

## Assemblaggio Orizzontale Horizontal Assembly

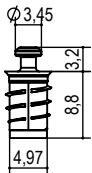
sfasamento foratura perno  
hole phase displacement



sfasamento per assemblaggio  
not aligned for assembly



← direzione di assemblaggio  
assembling direction

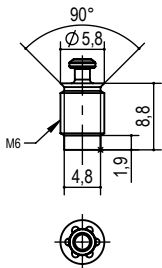
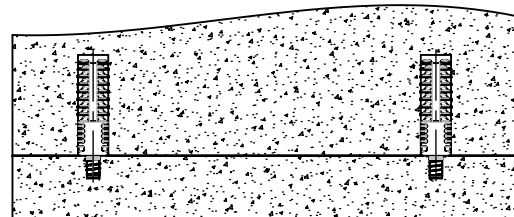
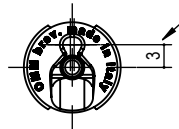
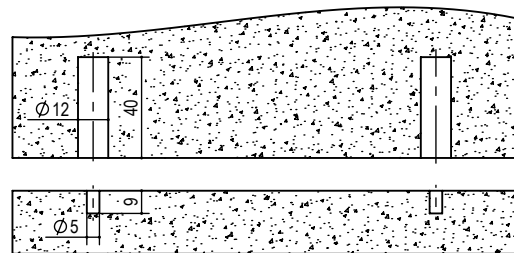


Perno a scomparsa TS.EU  
Hidden pin TS.EU  
Chiave torx T25  
torx screwdriver T25  
A.GN400.TSEU.05.09.00  
Box A 5000 pcs



## Assemblaggio Verticale Vertical Assembly

sfasamento foratura perno  
hole phase displacement



Perno a scomparsa M6  
Hidden pin M6  
Chiave torx T25  
torx screwdriver T25  
A.GN400.TSM6.05.09.02  
Box A 5000 pcs

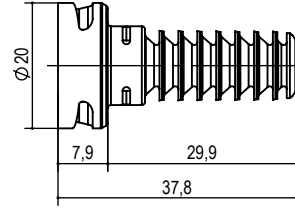
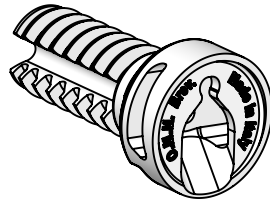
tipo <u>type</u>	misura <u>measure</u>	finitura <u>finishing</u>	kg / 1000pz	pcs/ box	box
P.GN452.	12.	53 nero <b>black</b>	6	2000	B

es./e.g.: P.GN452.12.53

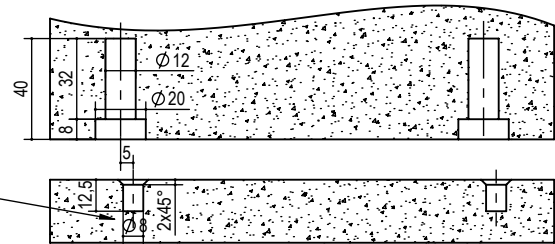


# Giunzione tipo GN452.20 a scomparsa Invisible shelf support GN452.20 type

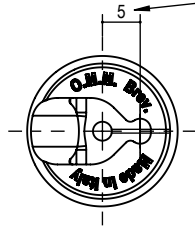
nylon grigio  
gray nylon



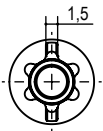
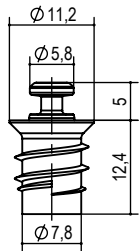
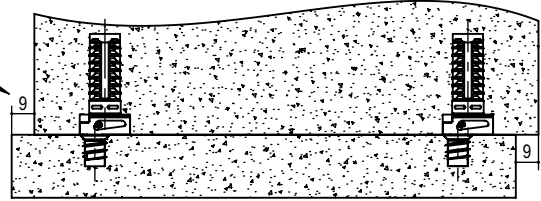
## Assemblaggio Orizzontale Horizontal Assembly



sfasamento foratura perno  
hole phase displacement

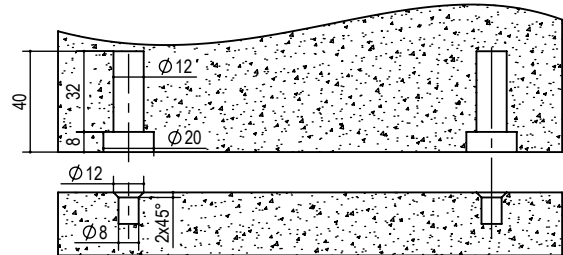


sfasamento per assemblaggio  
not aligned for assembly

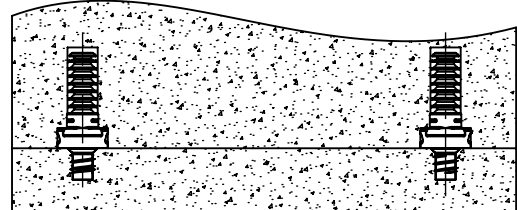
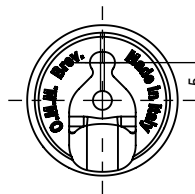


Perno con molla TS  
Pin under spring TS  
torx T45  
blade+torx screwdriver  
A.GN400.TS.8.12.5.00

## Assemblaggio Verticale Vertical Assembly



sfasamento foratura perno  
hole phase displacement



tipo type	misura measure	finitura finishing	kg / 1000pz	pcs/ box	box
P.GN452.	20.08.	53 nero balck	6	2000	B

es./e.g.: P.GN452.20.08.53



## Compatibilità viti e reggripiani Compatibility between screws and shelf supports

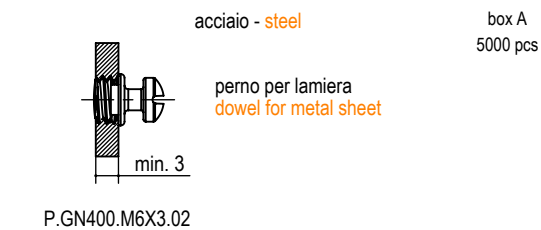
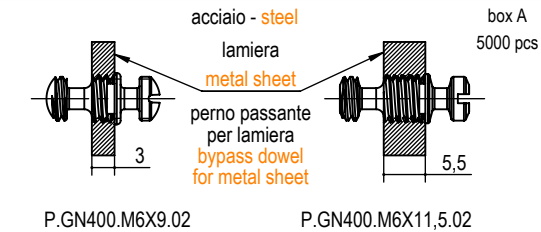
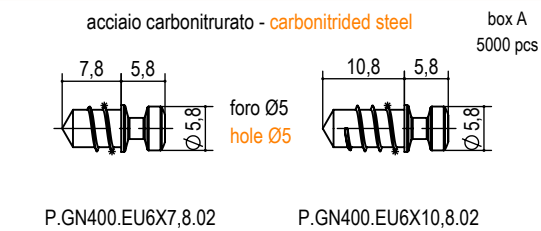
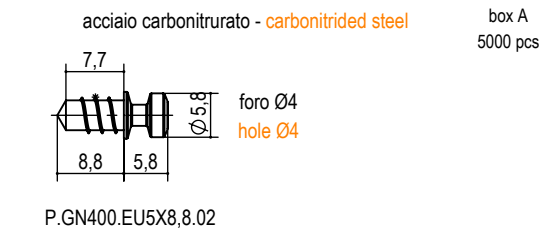
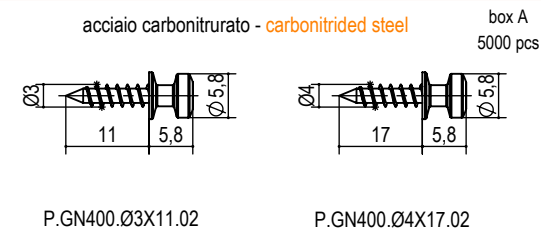
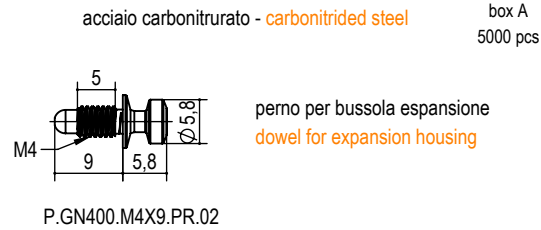
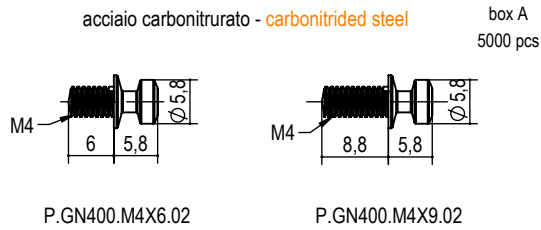
ACCESSORI  
ACCESSORIES



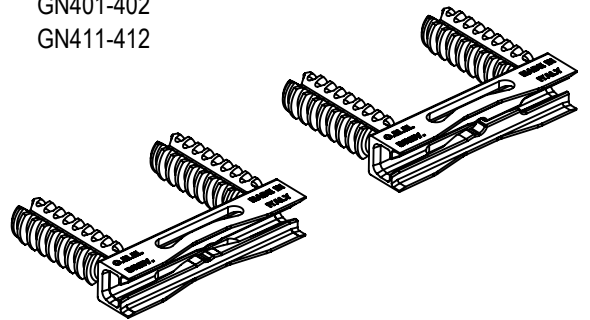
TAPPO PER FORO Ø8  
COVER CAP FOR Ø8 HOLE  
P.T.400.08



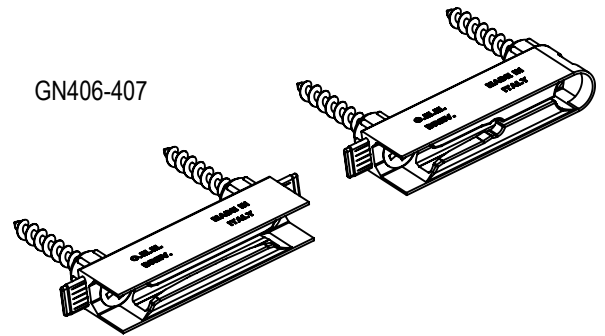
TAPPO PER FORO Ø10  
COVER CAP FOR Ø10 HOLE  
P.T363.11.5.09.00



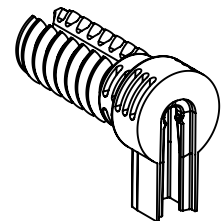
GN401-402  
GN411-412



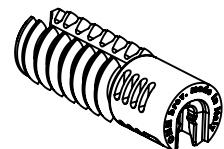
GN406-407



GN361



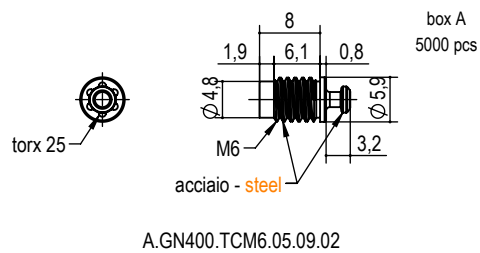
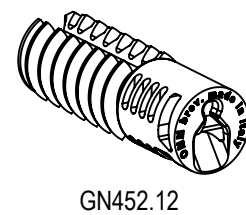
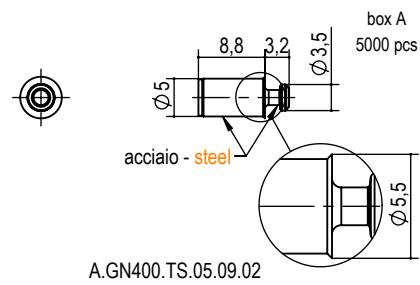
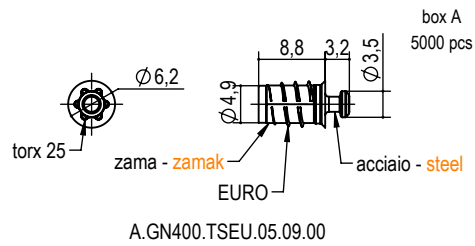
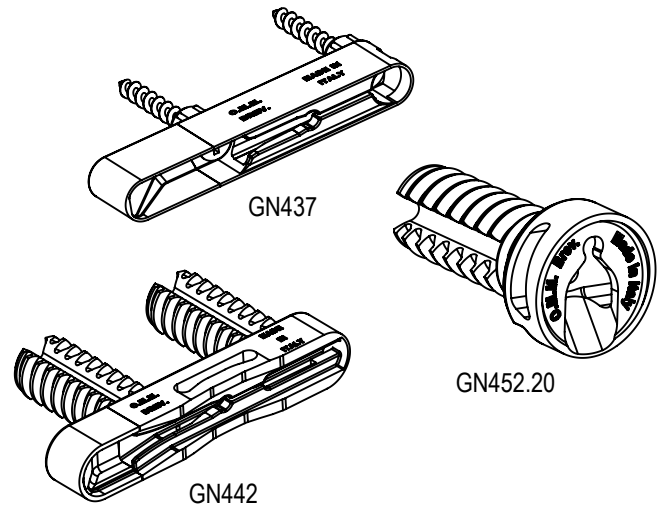
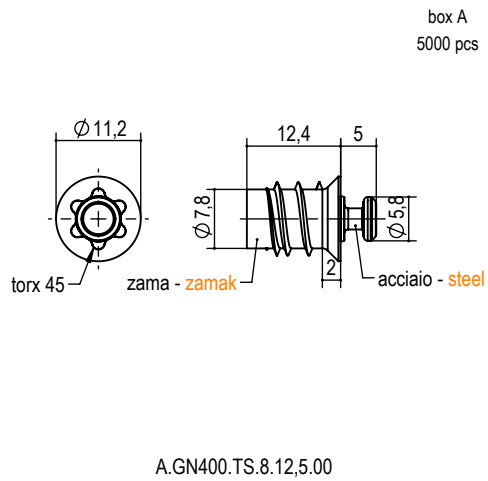
GN363





## Perni con molla e inserti GN400

### Spring dowels and inserts for GN400





## Giunzioni Connecting fittings

# Serie GN500 GN500 Series

LA GIUNZIONE DELLA SERIE GN500 E' CARATTERIZZATA DALL' AVERE IL SISTEMA DI UNIONE QUASI A SCOMPARSA, L'UNICA PARTE VISIBILE E' UN FORO Ø5 PER LA REGOLAZIONE.

INDICATA PER ASSEMBLAGGI IN NICCHIA STRUTTURALI. RUOTANDO LA CHIAVE ES. 4 SI HA L'USCITA DEL PERNO M6 ED IL RELATIVO FISSAGGIO TRA FIANCO E RIPIANO. POSSIBILITA' DI SMONTAGGIO

#### CARATTERISTICHE:

- Elevata tenuta in trazione 1'000N
- Elevata resistenza allo sforzo di taglio 1'500N
- Inserimento rapido unidirezionale
- Adatto per montaggi in nicchia
- Possibile smontaggio
- Chiave passante su foro di regolazione es.4

GN500 SERIES CONNECTING FITTING CHARACTERIZED BY HAVING A ALMOST INVISIBLE UNION SYSTEM, THE ONLY VISIBLE AREA IS THE Ø5 HOLE FOR THE ADJUSTMENT.

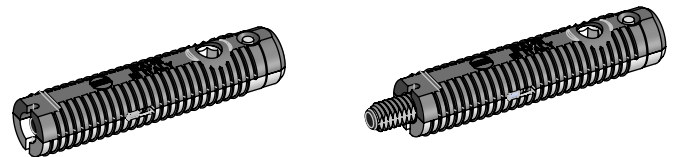
INDICATED FOR STRUCTURAL IN NICHE ASSEMBLIES. SAFE FIXING SIDE-SHELF: BY TURNING THE HEXAGONAL KEY YOU'LL HAVE THE OUTPUT OF THE M6 PIN. POSSIBLE DISASSEMBLY

#### FEATURES:

- High resistance to extraction 1'000 N
- High resistance to cutting effort 1'500 N
- Unidirectional fast installation
- For niche installations
- Possible disassembly
- Pass-through key on the hex. 4 hole

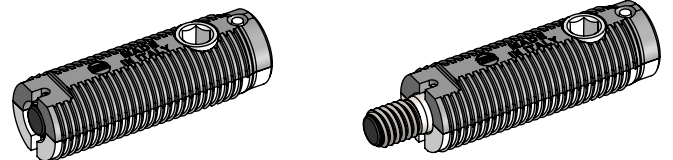
### GN508

spessore min. 12+14, foro Ø8x38  
min. thickness 12+14, hole Ø8x38



### GN512

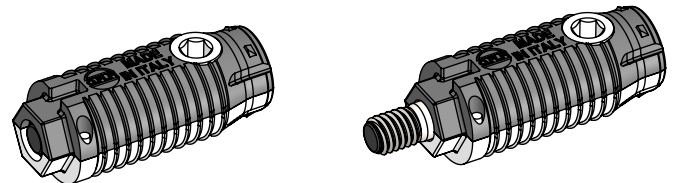
spessore min. 18, foro Ø12x38  
min. thickness 18, hole Ø12x38



consigliata per spessori da 18 a 25  
recommended for thicknesses from 18 up to 25

### GN515

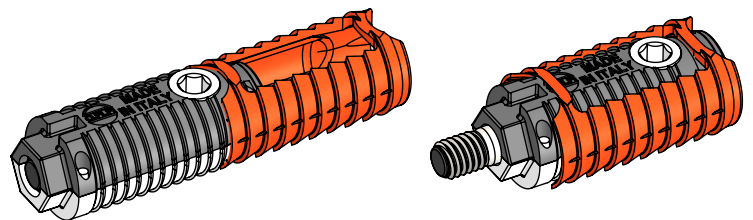
spessore min. 25, foro Ø15x38  
min. thickness 25, hole Ø15x38



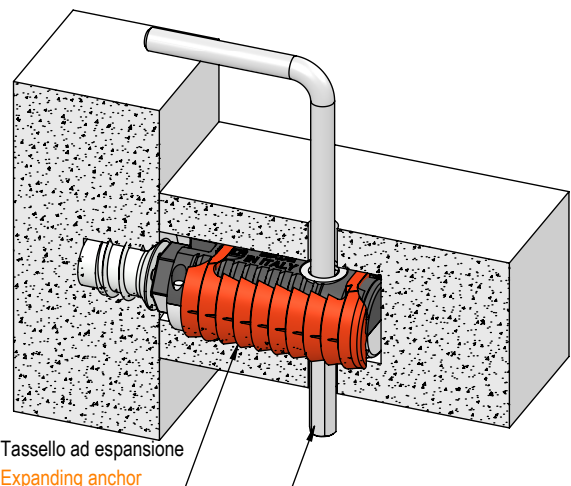
consigliata per spessori da 25 in su  
recommended for thicknesses from 25 upwards

### GN516

spessore min. 25, foro Ø16x38  
min. thickness 25, hole Ø16x38



consigliata per spessori da 25 in su  
il tassello plastico aumenta le garanzie di tenuta nel caso che il diametro di foratura non sia preciso e costante nel tempo  
recommended for thicknesses from 25 upwards  
the plastic plug increases the sealing guarantees in case the drilling diameter is not accurate and constant over time



Tassello ad espansione  
Expanding anchor

chiave es. 4 passante attraverso la giunzione  
key hex. 4 passing through the connection



## Giunzioni Connecting fittings

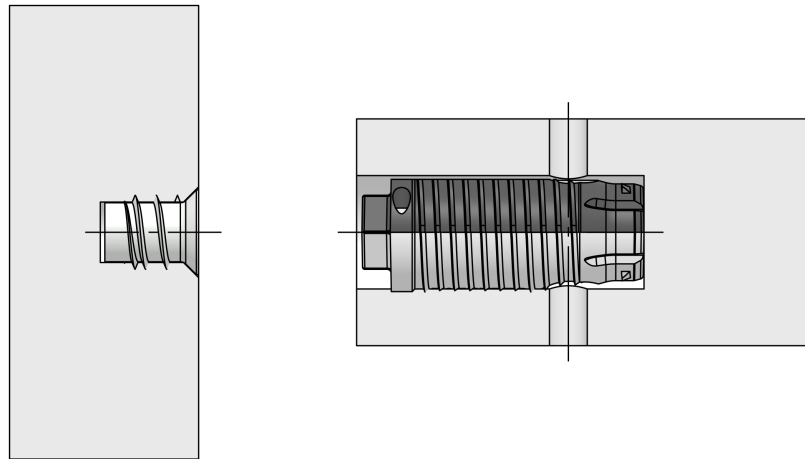
### Funzionamento Serie GN500 senza tassello espansione Operation GN500 Series without plastic gusset

LA GIUNZIONE DELLA SERIE GN500 E' CARATTERIZZATA, DALL' AVERE IL SISTEMA DI UNIONE A SCOMPARSA, L'UNICA PARTE VISIBILE E' UN FORO Ø5 PER LA REGOLAZIONE.

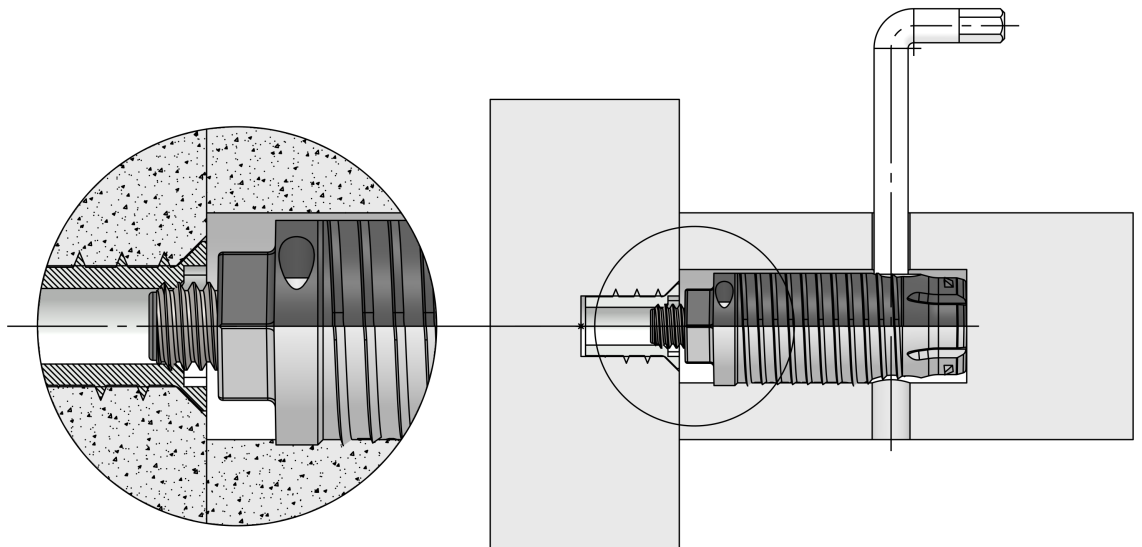
INDICATA PER ASSEMBLAGGI IN LUCE STRUTTURALI. RUOTANDO LA CHIAVE ES. 4 SI HA L'USCITA DEL PERNO M6 ED IL RELATIVO FISSAGGIO TRA FIANCO E RIPIANO.

GN500 SERIES: CONNECTING FITTING CHARACTERIZED BY HAVING, BEFORE ASSEMBLY, A FULLY RETRACTABLE CONNECTION SYSTEM. INDICATED FOR STRUCTURAL IN LIGHT ASSEMBLY. SAFE FIXING SIDE-SHELF: BY TURNING THE HEXAGONAL KEY YOU'LL HAVE THE OUTPUT OF THE M6 PIN.

Giunzione inserita nel foro  
Junction inserted into the hole



Girando la chiave es. 4, il filetto M6 esce e si avvita sulla bussola del montante  
Regulation by hex key 4, the screw M6 goes out connecting with the bush







## Giunzioni Connecting fittings

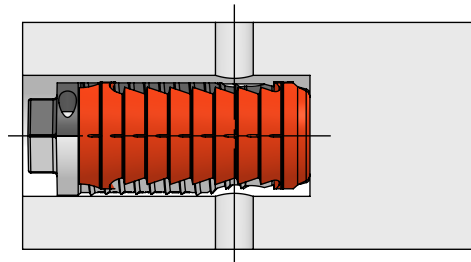
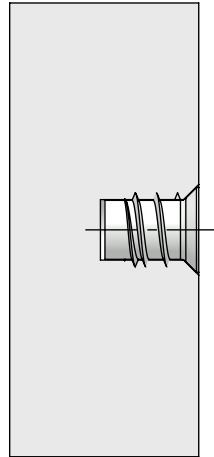
### Funzionamento Serie GN500 con tassello espansione Operation GN500 Series with plastic gusset

LA GIUNZIONE DELLA SERIE GN500 E' CARATTERIZZATA, DALL' AVERE IL SISTEMA DI UNIONE A SCOMPARSA, L'UNICA PARTE VISIBILE E' UN FORO Ø5 PER LA REGOLAZIONE.

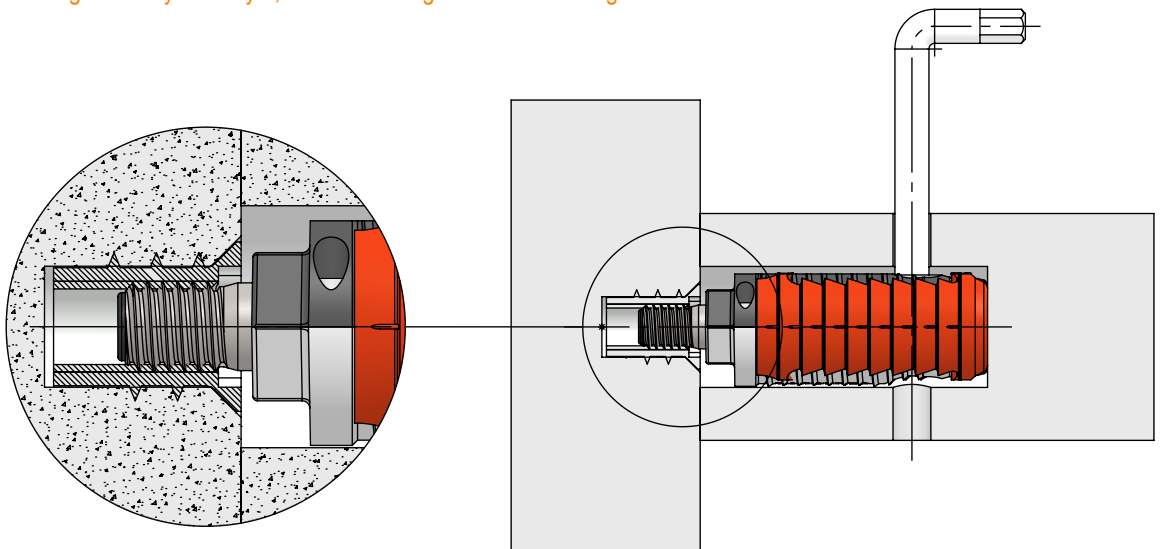
INDICATA PER ASSEMBLAGGI IN LUCE STRUTTURALI. RUOTANDO LA CHIAVE ES. 4 SI HA L'USCITA DEL PERNO M6 ED IL RELATIVO FISSAGGIO TRA FIANCO E RIPIANO.

GN500 SERIES: CONNECTING FITTING CHARACTERIZED BY HAVING, BEFORE ASSEMBLY, A FULLY RETRACTABLE CONNECTION SYSTEM. INDICATED FOR STRUCTURAL IN LIGHT ASSEMBLY. SAFE FIXING SIDE-SHELF: BY TURNING THE HEXAGONAL KEY YOU'LL HAVE THE OUTPUT OF THE M6 PIN.

Giunzione inserita nel foro  
Junction inserted into the hole



Girando la chiave es. 4, il filetto M6 esce e si avvita sulla bussola del montante  
Regulation by hex key 4, the screw M6 goes out connecting with the bush





# Giunzioni tipo GN500

## Connecting fitting GN500 type



Test Report:  
GN512: 339193/1  
GN515: 339194/1  
GN516: 339195/1

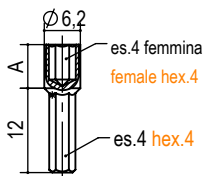


GN508: 40 N  
GN512: 1000 N  
GN515: 700 N  
GN516: 1200 N

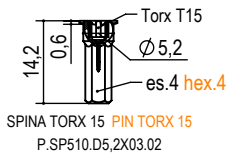
### ACCESSORI ACCESSORY



BUSSOLA TORX 45 M6  
HOUSING TORX 45 M6  
P.TS.08.M6X12.5.00



SPINA ES. 4 - ES. 4 PIN HEX. 4 - HEX. 4  
P.SP510.D6.2XA.00 A= 6,5 - 7,5 - 20



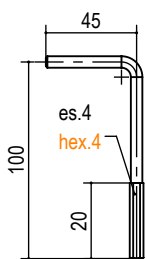
SPINA TORX 15 PIN TORX 15  
P.SP510.D5.2X03.02



TAPPO PER SPINA ES. 4  
PIN HEX. 4 CAP  
P.T360.10.05.04.00



TAPPO CIECO  
BLIND CAP  
P.A458.05.00

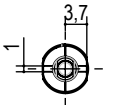
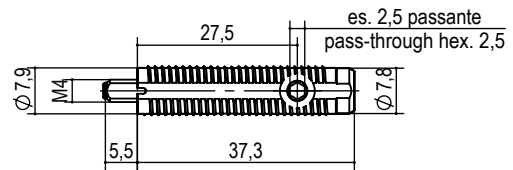
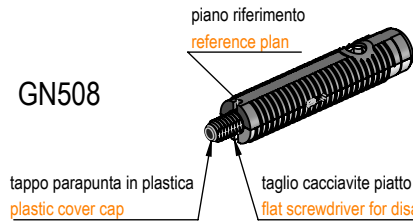


chiave es. 4 gambo  
ribassato Ø3.8  
key eg. 4 stem  
diameter lowered Ø3.8  
P.A087.4.100.45.00

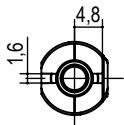
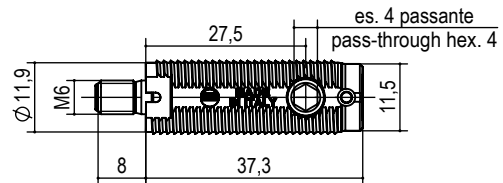
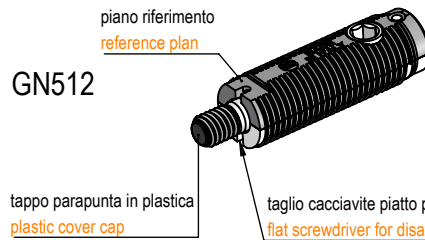
www.omm.name  
omm@omm.name  
tel. 0362.622377

zama - acciaio - plastica  
zamak - steel - plastic

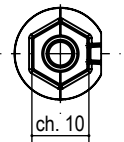
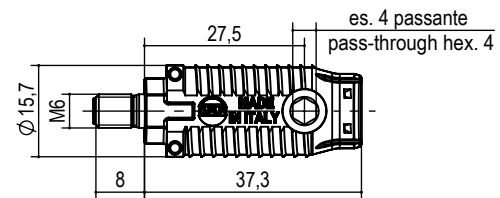
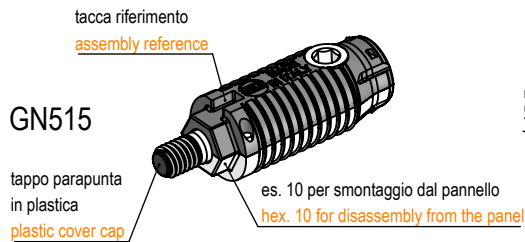
### GN508



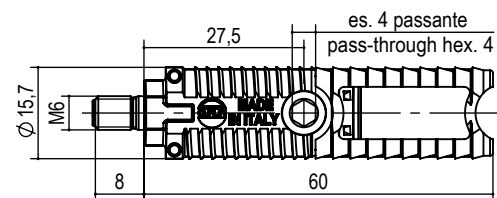
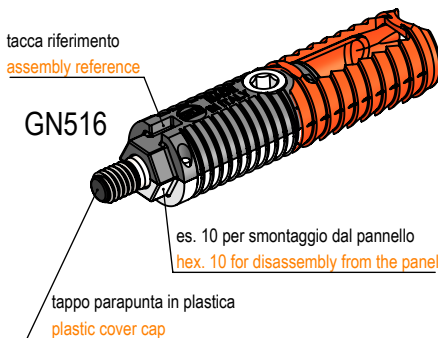
### GN512



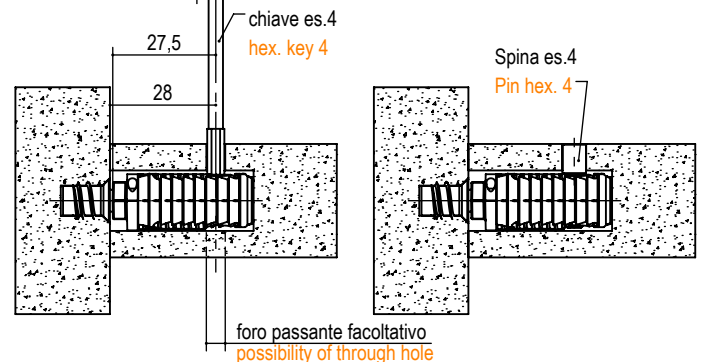
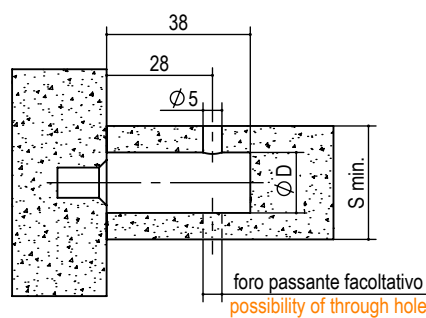
### GN515



### GN516



ingresso chiave es. 4 sul lato della giunzione colore nero  
key hex.4 input on the black side of the connection



tipo type	misura measure	finitura finishing	ØD	spessore min. S min. thickness S	kg / 1000pz	pcs/ box	bo x
GN508.	08.28	00 grezzo raw	8	12 + 14	9	500	B
GN512.	12.28.		12	18	19	500	
GN515.	15.28.		15	22	25	500	
GN516.	16.28.		16	25	29	500	

es./e.g.: GN512.12.28.00

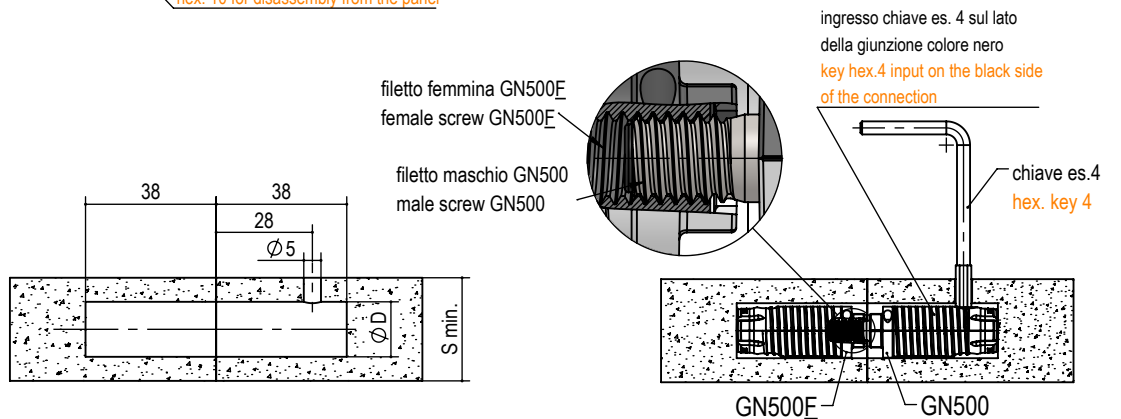
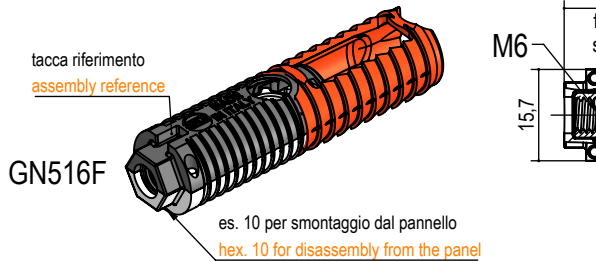
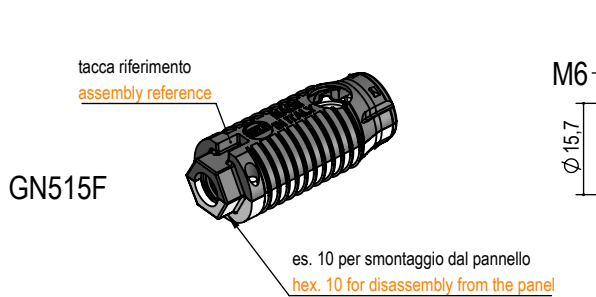
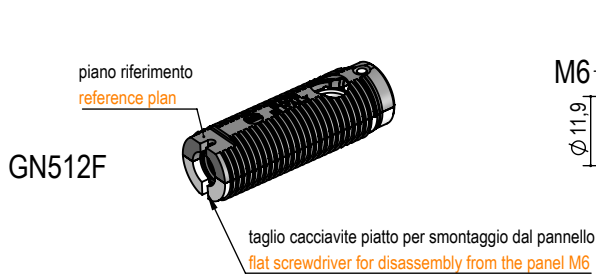
# Giunzioni tipo GN500 M6 femmina

## Connecting fitting GN500 type M6 female thread

zama - acciaio - plastica  
zamak - steel - plastic



GN508: 40 N  
GN512: 1000 N  
GN515: 700 N  
GN516: 1200 N



tipo type	misura measure	finitura finishing	ØD	spessore min. S min. thickness S	kg / 1000pz	pcs/box
GN508F.	08.		8	12 + 14	12	500
GN512F.	12.		12	18	19	500
GN515F.	15.	00 grezzo raw	15	25	27	500
GN516F.	16.		16		29	500

es./e.g.: GN512F.12.00